

Old Lyme



Events

www.eventsmagazines.com

Volume 8 • Quarter 3 • 2014




SMARTER CARE NOW HAS A NEW ADDRESS

Shoreline Medical Center Is Now Open in Westbrook

At twice the size of our previous facility in Essex, our new Shoreline Medical Center in Westbrook offers expanded 24/7 emergency care and outpatient diagnostic services, including a new women's imaging center, a brand new MRI suite, CT, X-Ray, a full service lab and more. Best of all, it's conveniently located right off Exit 65 on I-95. Delivering state-of-the-art care to more of the state—that's *The Smarter Choice for Care*.

***Learn more at middlesexhospital.org/shoreline
or call (860) 358-3700***

 250 Flat Rock Place, Westbrook
Just Before the Tanger Outlets

The Smarter Choice for Care

 **MIDDLESEX HOSPITAL**
SHORELINE MEDICAL CENTER



Sprigs
& Twigs

LANDSCAPES
TREE CARE
LAWN CARE



Stewards Of The Environment



THE OFFICIAL
LANDSCAPE COMPANY
OF MYSTIC SEAPORT



MYSTIC
AQUARIUM
The Official Landscape Company
of the Mystic Aquarium

GALES FERRY, CONNECTICUT
PHONE 860.235.0752
WWW.SPRIGSANDTWIGS.NET

The Sprigs and Twigs Team of Tree Care, Lawn Care and Landscape Service Professionals are fully licensed and insured. CT Arborist License S-5637 CT Reg #577341.

0434579



GLOBAL IS THE DIFFERENCE



EAST LYME, CT

Vacation year-round in this classic 1960's modern-style waterfront home. Open floor plan provides a casual & inviting atmosphere. Expansive LI Sound views. \$1,975,000

Joe Rhodes
C. 860.227.0921



LYME, CT

Spectacular CT River waterfront, custom built with superb detailing and amenities. Deluxe MBR suite. Multiple decks, deep-water dock and 3-bay garage. \$2,299,000

Joe Rhodes
C. 860.227.0921



LYME, CT

Captivating Hamburg Cove waterfront estate privately set in the scenic Lyme hills. Funicular leads to gracious frontage, boat house and deep-water dock. \$1,950,000

Nancy Mesham
C. 860.227.9071



OLD LYME, CT

Sweeping views of the CT River and Lord's Cove. Fine design & quality craftsmanship throughout. Privately sited on 14.8 acres with access to River & beyond. \$2,975,000

Joe Rhodes
C. 860.227.0921

Since 1933 ... World Leader in Marketing Luxury Homes \$102.7 Million in Sales Daily *

Customized Marketing

Expert Guidance

3115 Offices in 50 Countries

*Data based on closed and recorded transaction sides of homes sold for \$1 million or more as reported by the U.S. Coldwell Banker franchise system in 2013



OLD LYME, CT

Majestic water views are found from this modern-designed home with traditional facade. Flowing interior spaces, multiple decks, pool & beach. A must see. \$2,800,000

Marilyn Jacobs Marie Lee
C. 860.304.6264 C. 860.304.0618



OLD LYME, CT

Lieutenant River architectural masterpiece. Unique one-floor living experience featuring 4BRs, 4.5BAs. Lush grounds, pool complex and dock. Stunning! \$1,675,000

Nancy Mesham
C. 860.227.9071



OLD LYME, CT

Superb craftsmanship in this stunning River Bend residence. Gracious open plan with exceptional entertainment space. Pool complex and Association tennis. \$1,549,000

Nancy Mesham
C. 860.227.9071



OLD LYME, CT

Beautiful custom-built home! Exquisite detailing. Magnificent kitchen, elegant DR & inviting bluestone porch. Private setting yet convenient location. \$1,350,000

Susie Kelly
C. 860.389.5615

Old Lyme Office | 86 Halls Road, Old Lyme Marketplace | Old Lyme, CT 06371 | 860.434.8600

COLDWELLBANKERPREVIEWS.COM

Africa North America Central America South America Asia Australia Caribbean Europe Middle East South Pacific



©2014 Coldwell Banker Residential Brokerage. All Rights Reserved. Coldwell Banker Residential Brokerage fully supports the principles of the Fair Housing Act and the Equal Opportunity Act. Operated by a subsidiary of NRT LLC. Coldwell Banker, the Coldwell Banker Logo, Coldwell Banker Previews International, the Coldwell Banker Previews International logo and "Dedicated to Luxury Real Estate" are registered and unregistered service marks owned by Coldwell Banker Real Estate LLC.



Selectwoman's Corner

As usual, Summer has passed far too quickly, but Fall usually brings a wonderful array of colors and much needed rain! Hopefully, you and your family have had some time to enjoy the warm summer weather and some down time. Here are some of the projects that we have been working on throughout the summer:

Natural Hazards Mitigation Plan: You may recall that the Town of Old Lyme updated the plan and received approval of the plan from CT DEEP this past Spring. The plan was then submitted to FEMA for approval, and after some minor adjustments, the plan was "approved pending adoption" by FEMA in July. Adoption of the plan by the Board of Selectmen, which is likely by August 31, means that we are eligible to receive grants for mitigation projects that are listed within the plan. You can view the plan on the Town website (www.oldlyme-ct.gov), by clicking on Current Projects. Special thanks are given to Jeremy DiCarli from the RiverCOG for his invaluable help on the plan, as well as the committee of volunteers who reviewed it for accuracy.

Special Town Meeting: On July 29 there was a Special Town Meeting to approve two items. The first item was to approve acceptance of a parcel of land from the CT DEEP. The parcel borders Halls Road and land owned by the town on the Lieutenant River, just north of Halls Road. The Harbor Management Commission was interested in acquiring the

land to allow for better access to the river, as well as a bit more parking for people who might like to launch a kayak or other small craft by hand. There will be an effort to clean it up and maybe add a bench. The area along the Lieutenant River is one of our most beautiful views, and this will allow enjoyment of the vista for more people. The second item on the agenda was approving an amount not to exceed \$30,000 to fund the Rogers Lake Weed Study, as per the Scope of Work submitted by New England Environmental, Inc. (NEE, Inc.). The total cost of the study is \$88,330, to be paid by both Lyme and Old Lyme (\$44,165 each). Our FY 2015 budget includes \$15,000 for this study, so we needed approval for the additional amount. I am pleased to report that both items passed unanimously and those in attendance were pleased with the presentations.

Rte 156 Bike Path and Sound View Improvements: Work on this project has continued throughout the summer, though most of the work is research, data collection and internal work on the plans. BSC Group, Inc. has conducted a survey in the area of Hartford Ave., Portland Ave., and Swan Ave., and a drilling rig has performed test holes in the Town Parking



First Selectwoman
Bonnie Reemsnyder

continued on page 5

POLITO & QUINN

TRIAL LAWYERS

Serving Connecticut and Rhode Island

Connecticut "Super LawyersSM" for 8 consecutive years
and U.S. News BEST LAW FIRM



Humbert J. Polito, Jr., Esq.
Admitted in CT & RI
CT Super Lawyer



James M. Harrington, Esq.
Admitted in CT & Tribal Courts
CT Rising Star



Tel: (860) 447-3300 | www.politoandquinn.com

Wrongful Death • Medical Malpractice • Automobile Accidents
Practicing In... Mohegan Tribal Courts • Mashantucket Tribal Courts

Earth Care

of Old Lyme

"where vision becomes reality"

Property Maintenance Management and Care Taking Services

| | |
|---|---|
| <p>MAINTENANCE SERVICES</p> <ul style="list-style-type: none"> • Year Round Landscape & Lawn Care • Dethatching, Core Aeration, & Seeding • Stone Driveways, Edging, & Aprons • Cobblestone, Bluestone, Paver Projects • Drainage Problems Addressed • Stone Wall Restoration & Construction • Retaining Walls & Seawalls • Small Paving Repairs | <p>MANAGEMENT SERVICES</p> <ul style="list-style-type: none"> • Complete 24/7 Property Monitoring & Inspection • Coordinating Deliveries & Postal Needs • Scheduling & Monitoring Tradesmen • Storm Preparation & Clean Up • Evaluating & Scheduling Emergency Repairs • Complete Snow Removal Service • References & Bonding Available |
|---|---|

Tired of Unreliable People? Call

David K. Flagge

Shore Road, Old Lyme, CT

Fully Insured - Lic. #578608

Phone & Fax: 860-434-0558



Robinson Wright & Weymer
Funeral Home Inc.

*Serving All Faiths
in the Community Since 1894
Family Owned and Operated*

860-767-8000

Director/Owner P. Samuel Fulginiti
Director/CFSP Jordan A. Welles
34 Main Street, Centerbrook, CT 06409

Welcome Our New Pediatrician



East Lyme Pediatric Clinic is pleased to announce a new addition to our practice. Please join us in welcoming Dr. Eugene Fantl to our Family. Dr. Fantl is board certified in Pediatric Medicine. He comes to us with thirty-five years of pediatric experience in many different teaching settings. Dr. Fantl looks forward to providing the best quality care and support for you and your family. East Lyme Pediatric Clinic has serviced South Eastern Connecticut for the past fifteen years. We are accepting new patients. Please call 860-739-7444 to schedule an appointment.

Sajda Malik, MD Jessie Brutus, MD
Eugene Fantl, MD Wendy Moss, LPN

East Lyme Pediatrics
We Care for You!

170 Flanders Road • Niantic, CT 06357
860-739-7444

CALL TODAY FOR A PRIVATE TOUR: 860-345-3779

**I found it Easy to Move
to The Saybrook at Haddam...**
**However, My Cat Francey
Found the Move to be Traumatic.**

Everyone at The Saybrook at Haddam has helped make Phyllis and her cat Francey's move from their home in Madison to their bright and spacious apartment – a wonderful experience!

Phyllis has settled in and is enjoying time in the gardens, meals in the elegant dining room, exercising and social activities. We are giving Francey a little more time to become comfortable with his new surroundings – but we know he will come around!

For independent residents like Phyllis, The Saybrook at Haddam offers gracious retirement living at an unmatched value.

For residents who need more assistance with daily living, the professional, experienced staff is ready to meet their needs.



Resident Phyllis Donohue in her apartment with her cat Francey.



An Assisted Living Retirement Community

1556 Saybrook Road, Haddam, CT 06438
www.thesaybrookathaddam.com

*Also featuring **Safe Harbor**, a special care neighborhood for residents with Alzheimer's or dementia.*

• *Selectwoman's Corner continued from page 3* •

Lot to collect geotechnical data. Once all of the necessary information is gathered, we expect to be presenting plans at informational sessions this Fall. Selectwoman Mary Jo Nosal is diligently moving this effort forward – special thanks for her efforts, as well as the Committee overseeing the project. Be sure to log on to our town website and subscribe so that you get the information as soon as it is posted.

Boathouse/Hains Park Improvements: This committee has continued its fast pace throughout the summer in an effort to proceed to construction by November of this year. They have had to get approvals on various aspects of the project from Zoning, ZBA, Inland Wetlands and Health, to name a few. The plans are impressive, and I am pleased to report that they have developed a master plan for all of Hains Park. In this way, any work done will support future efforts within the park. The Town of Old Lyme has received a STEAP grant of \$478,000 to fund the project, which includes expansion of the boathouse, dock upgrades and other improvements. All agree that it is a tight budget, and considerations are being reviewed for additional fundraising efforts to support the project. Selectman Skip Sibley is working closely with the Committee on this project – special thanks to him and the Committee for their hard work. If you would like to read about the progress on this project, be sure to visit the Town website and click on Current Projects. Minutes of their meetings are always posted on the web.

Revaluation: Vision Appraisal has completed their data collection for the Revaluation and continues to work on pulling the information together for the final numbers. Homeowners will receive a notice to confirm the details of their home (# bedrooms, baths, etc.). **If all of the information is correct, please do NOT return the notice – only return if there are corrections to be made.** Notices of assessment change will be mailed out to homeowners sometime in mid-November. The process is nearing completion and we want to thank everyone for their patience and cooperation during this time.

Wastewater Management Project: The WPCA has been busy following up on the study that was done by Woodard & Curran for the shoreline area from White Sand Beach to Old Lyme Shores. The study looked at two options – a local solution, and piping to the New London Wastewater Treatment facility. After reviewing these options, and in light of the fact that three chartered beach associations are hooking up to New London, the WPCA voted to work on the regional option. We will continue to communicate progress on this major project.

Business Breakfast on July 16: Continuing with their collaboration, the Chamber of Commerce and Town of Old Lyme hosted their third Business Breakfast on July 16th at the Shoreline Community Center on Hartford Ave. The location was chosen because the presentation was an update on the Sound View Improvements progress, as well as a focus

continued on page 7

SHOP SPIRITS & SAVE! • SHOP SEASIDE & SAVE! • SHOP SPIRITS & SAVE! • SHOP SEASIDE & SAVE!

SUMMER, EXTENDED!!

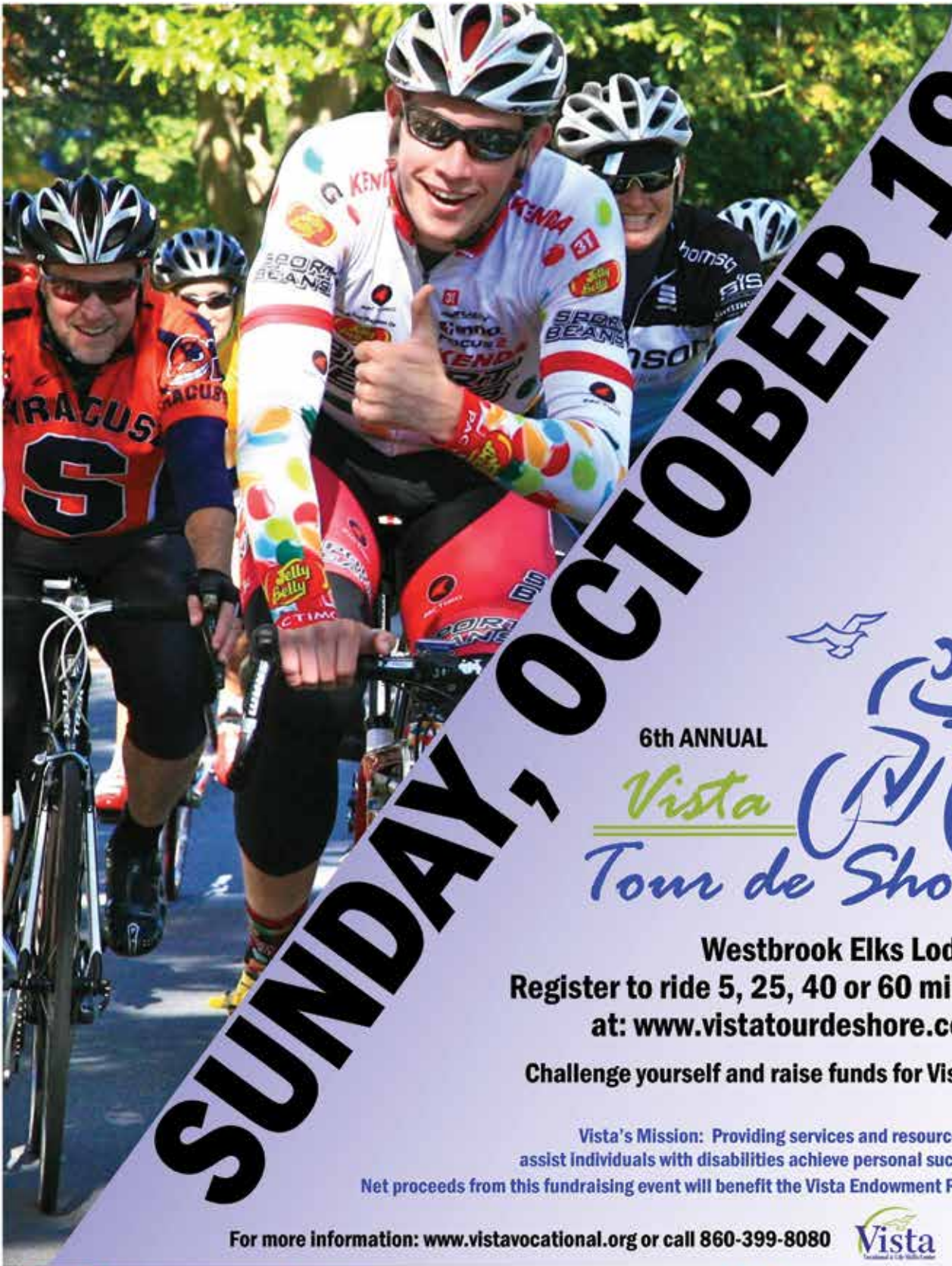
SALE! COMPARE!



SEASIDE WINE & SPIRITS
118 Main Street - Old Saybrook
860.388.3015

SERVICE - SELECTION - EVERYDAY LOW PRICES - CONVENIENCE
 EASY PARKING - WEDDING & PARTY SOLUTIONS - SMILES

SHOP SPIRITS & SAVE! • SHOP SEASIDE & SAVE!



SUNDAY, OCTOBER 19

6th ANNUAL

Vista Tour de Shore

Westbrook Elks Lodge
Register to ride 5, 25, 40 or 60 miles
at: www.vistatourdeshore.com

Challenge yourself and raise funds for Vista!

Vista's Mission: Providing services and resources to assist individuals with disabilities achieve personal success
Net proceeds from this fundraising event will benefit the Vista Endowment Fund.

For more information: www.vistavocational.org or call 860-399-8080



Branford | Fairfield



Branford Jewelers




• *Selectwoman's Corner continued from page 5* •

on the Wastewater Management Project by the WPCA. It gave many people an opportunity to familiarize themselves with the area and businesses on Hartford Avenue. The breakfast began at 7:30 am and was well attended by area residents and businesses. This venue has been well received by many and we will continue to plan these for the future. If you are interested in suggesting a topic of discussion, please email the Selectman's Office at selectmansoffice@oldlyme-ct.gov with your suggestions.


Midsummer Festival: The Midsummer Festival was an absolute success this year. The weather was beautiful from Friday evening right through Saturday night. I hope you had a chance to enjoy the concert on the lawn of the Flo Gris Museum, visit the many displays on Lyme Street, or enjoy the numerous food choices available on Saturday afternoon. The festival wrapped up on Saturday evening with entertainment by the Old Lyme Town Band, and a wonderful fireworks display by Pyrotecnico. Many thanks are due to those individuals who work hard each year to assure the success of the festival. Also, thank you to M & J Bus Company for donating a bus, and to the driver, Amy Winger, who donated her time to shuttle people back and forth to the fireworks. It was a wonderful weekend to be in Old Lyme.

Welcome Back to School to our Regional School District #18 students! Selectwoman Mary Jo Nosal, Selectman Skip Sibley, and I extend our wishes for a wonderful Fall season, free of any major storms!

Bonnie A. Reemsnyder, First Selectwoman



SHORELINE PERIODONTICS PC



- Dental Implants
- Laser Gum Surgery
- Esthetic Gum Surgery

Gregory A. Toback, D.M.D., M.S.
Board Certified Periodontist

"Our practice is committed to providing patients with state-of-the-art treatment for all forms of periodontal disease in a comfortable and caring environment."

Free Implant Consultations

NEW LONDON, CONNECTICUT
190 Hempstead St
New London, CT 06320
860-443-2428



www.shorelineperio.com

Mary STONE

for STATE REPRESENTATIVE

Old Saybrook ★ Westbrook ★ Lyme ★ Old Lyme



Mary Stone for State Representative – A New Voice for Us

“My greatest satisfaction comes from helping individuals and communities achieve their goals. As your State Representative, I will work tirelessly for our towns, our neighborhoods, and for you.”

- Create jobs by helping small and medium-size businesses grow
- Prepare for storms
- Protect our Lower Connecticut River Valley
- Fix public education mandates
- Increase the accountability of our public institutions to restore confidence

Positive achievements for the community:

- ★ Lyme–Old Lyme Board of Education, 2 terms: 1999 – 2007
- ★ Old Lyme Zoning Board of Appeals, 2 terms: 2011– present
- ★ Old Lyme Open Space Commission
- ★ Friends of the OL-PGN Library Co-President, 2004-2007
- ★ Lyme-Old Lyme Education Foundation, Secretary.

Paid for by the Old Lyme Democratic Town Committee. Approved by Mary Stone.

Vista Arts Center: Celebrating the Artist Within



The Vista Arts Center is a unique community arts program for adult artists of all abilities. Located in Madison, Connecticut, the Vista Arts Center has been offering classes in literary, performing, and visual arts since September 2012 and is now opening its classes to all adults on the shoreline community. The Vista Arts Center is unique in that they believe that the ability lies inside everyone, and they are waiting to “celebrate the artist within” you. The Vista Arts

Center’s mission is to provide quality arts programming to a diverse adult population that promotes self-expression and learning in a nurturing, noncompetitive environment. Their programming and instructional methods encourage the inclusion of all talent and skill levels while providing a platform for the development of artistic and interpersonal skill development, self-esteem and confidence. All courses are led by art professionals with many years of experience in their field of specialty and in individualizing instruction for a variety of students.

In almost two years of operation, the Vista Arts Center has grown exponentially in its diverse offerings, instructors and community involvement. They have participated in over 7 art showings, put on a full scale, all abilities, community theater production of Joseph and the Amazing Technicolor Dreamcoat in partnership with the Ivoryton Playhouse and seen their class offering grow from 4 classes to 30 classes. Registration for the Fall-Winter semester will be open August 15th with new and exciting offerings for everyone.

For more information about how you can start celebrating your artist within at the Vista Arts Center, please contact Jeanean Cox, Arts Program Manager at 860-399-8080 or jcox@vistavocational.org. Visit Vista online at <http://www.vistavocational.org>.



Fitness on the Water™

Offering **the Cuddy** for Snacks & Sundries!
a Private Fitness Studio Presented by Essex Wellness Center

A unique waterfront studio for private workouts, training and wellness services directly facing the scenic beauty of the Connecticut River at Brewer’s Dauntless Marina, Essex Village

FITNESS ON THE WATER IS LOCATED IN **ESSEX VILLAGE, DOCKSIDE, AT BREWER’S DAUNTLESS MARINA.**
 We offer private Personal Training; Nutritionists; Yoga/Pilates; Massage; Acupuncture; and Health Coaching by appointment.
 Open 7am to 7pm

Sessions are by appointment and space is limited to ensure your privacy in this beautiful waterside setting. Day passes, monthly, seasonal and annual memberships (at discounts!) for individuals & couples available now.

Fitness on the Water

CALL NOW TO RESERVE YOUR SESSION TIMES: **860.767.7770**

JOIN US WATERSIDE AT THE CONNECTICUT RIVER MUSEUM
 AND IN OUR GROUP WELLNESS STUDIO, 8 NOVELTY LANE

TAI CHI with Master Teacher David Chandler
 All Levels • On-Going Series Offered Mornings & Evenings
 Call Now to Sign Up – Space is Limited!

YOGA
 Mon & Fri: 9 -10AM \$17 Drop In • \$150 for 10 Classes

9 Novelty Lane, Brewer’s Dauntless Marina

OR EMAIL US AT **INFO@ESSEXWELLNESSCTR.COM**



William Pitt

Sotheby's
INTERNATIONAL REALTY

Colette Harron

860.304.2391

charron@wpsir.com



For All Levels Of Real Estate Advice



Niantic-Exceptional 12,000 sq. ft. hilltop estate with resort-like amenities. Designed for luxiouros yet practical daily living and entertaining. Spectacular views, impeccable grounds, tennis court/basketball court and pool house with kitchen. Lower level gameroom and sound proof screening theatre. Beautiful barn, rolling pastures and orchards. Offered at \$3,100,000



Old Saybrook-Waterfront and set high with spectacular views of the Connecticut River! Views from every room. Immaculate property. New addition with oversized master suite with sitting room. Exceptional patio surrounded by professionally landscaped grounds and stone walls. Offered at \$2,180,000



WATERFRONT

Lyme-Superb waterfront contemporary designed and built under the guidance of Jonathan Isleib. Incorporates expansive use of glass for dramatic water views. Lower level private guest quarters. Multiple decks for al fresco dining. Your own beach! Offered at \$1,778,000



SOLD

Old Lyme-Stately colonial on 2 private acres abutting golf course. Beautifully renovated with elegance, comfort and practicality. Eat-in chef's kitchen with additional sitting area and fireplace. A turn- key gem. Offered at \$1,275,000



WATER VIEWS

Niantic-This exceptional 1890 home was totally renovated in 2008. Set high on .67 private acres, it enjoys water views from every room and has deeded access to a dock on Pattagansett Bay. Enjoy this private setting. Offered at \$1,430,000



SOLD

Old Lyme-Private and set high on 3.5+ acres to meld into the terrain and designed to bring the outside in. This 4 BR modern house has 180 degree views of winding water ways from every room. First level living and LL guest rooms. Heated pool and multiple decks. Offered at \$1,290,000



NEWLY LISTED

Old Saybrook, Otter Cove-Spacious, modern 3 BR, 3 bath home on 3+ beautifully landscaped acres in desirable Otter Cove. New pool, great outdoor spaces & pond views. New high end kitchen. Close to Essex Village & Old Saybrook center. Comfortable 1 flr living. Offered at \$849,000



Old Lyme -This charming antique home is set high on Sil lane. Original wide wood floors and has great potential. The dining room with French doors leads to a stone patio. Another bluestone patio is accessed by a side entrance. Offered at \$495,000



RENTAL

Lyme -Stunning post modern contemporary set privately on 8 acres. Designed by renowned Yale architect King Luy Wu. Detached guest quarters. Three bedrooms and three baths. Offered at \$2,550 per month

williampitt.com

ESSEX BROKERAGE | 13 MAIN STREET | 860.767.7488

OLD LYME BROKERAGE | 103 HALLS ROAD | 860.434.2400

Each Office is Independently Owned and Operated © 2013 Citibank, N.A. equal housing lender, member FDIC. Citi, Citibank, Arc Design and Cib with Arc Design are registered service marks of Citigroup Inc.



MORTGAGE FINANCING AVAILABLE 1.855.298.5650



William
Pitt

Sotheby's
INTERNATIONAL REALTY

YEAR TO DATE

**WILLIAM PITT SOTHEBY'S INTERNATIONAL REALTY
HAS SOLD MORE MILLION DOLLAR HOMES
IN LYME AND OLD LYME
THAN ANY OTHER REAL ESTATE COMPANY!**

**William Pitt Sotheby's offers
"Million Dollar Marketing in ALL Price Ranges"**



SOLD

Lyme: With sweeping vistas over Ram's Horn Creek out to the Connecticut River, this magnificent architecturally designed custom built shingle style residence is remarkable.
Listed at \$1,750,000



SOLD

Old Lyme: Amazing restoration and addition completed in 2002. High quality materials, design and craftsmanship. Magnificent fireplaces, wide board floors, waterworks fixtures.
Listed at \$1,350,000



SOLD

Lyme: Dominick Dunne former 5 acres waterfront estate has been completely renovated to perfection. Proportions and scale are balanced with practicality and comfort throughout.
Listed at \$1,295,000



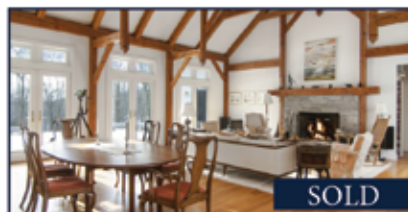
SOLD

Old Lyme: Set high on 3.5+ acres to meld into the terrain and designed to bring the outside in. This 4 bedroom modern house has 180 degree views of winding water ways from every room.
Listed at \$1,290,000



SOLD

Old Lyme: Stately Colonial on 2 private acres abutting the golf course. Beautifully renovated with elegance & comfort. Wood floors throughout & tray ceilings. Wine cellar.
Listed at \$1,275,000



SOLD

Lyme: Masterfully designed and constructed, this exceptional Post and Beam Contemporary is majestically sited on a magnificent 6.36 acre lot with commanding views over the CT River.
Listed at \$1,250,000

Information based on closed listings over \$1,000,000 from CTMLS 1/1/14 through 8/19/14.

williampitt.com

**ESSEX BROKERAGE | 13 MAIN STREET | 860.767.7488
OLD LYME BROKERAGE | 103 HALLS ROAD | 860.434.2400**

Each Office is Independently Owned and Operated 

© 2013 Citibank, N.A., equal housing lender, member FDIC. Citi, Citibank, Arc Design and Citi with Arc Design are registered service marks of Citigroup Inc.


MORTGAGE FINANCING AVAILABLE
1.855.298.5650

Shore Up CT

The state of Connecticut is making loans available to weather-proof coastal homes. Shoreline property owners can apply to a state-funded loan program that provides financing for coastal home and business owners, as a means of safeguarding properties from future severe weather and flooding.

The program, called Shore Up CT, will mainly finance property elevations, but also offers additional retrofitting for flood protection and wind proofing.

This program will serve as a crisis plan, allowing all those who live in shoreline communities and who did not meet the criteria for similar federal programs, to be protected from severe weather and flooding.

Accepted applicants can borrow up to \$300,000, with a minimum loan amount of \$10,000 and a 2.75 percent fixed interest rate.

Shore Up CT will be funded by the Department of Housing and managed by the Housing Development Fund. \$4.3 million of the program's funding will be immediately available for the initial set of projects, with up to \$25 million in additional monies to be made available.

Eligible properties for homeowners include:

- Primary and secondary single-family homes
- One to four-unit owner-occupied rentals
- Single-family homeowners who live in the property at least 14 days per year

Eligible properties for businesses include:

- Businesses with fewer than 100 employees
- Must be subject to coastal flooding and located in either Zone VE or Zone AE in coastline communities as defined by FEMA and NFIP

State Rep. Marilyn Giuliano represents Lyme, Old Lyme, Old Saybrook and coastal Westbrook in the Connecticut General Assembly.



FALL ACTIVITIES AT LYME SHORES

After-School Tennis Programs for Kids

Eight-week sessions throughout the school year starting Sept. 2

Big Shots (ages 4-6)
Tue. or Thu., 4-5pm

Local Excellence (ages 10-12)
Tue. & Thu., 4-5pm

Future Stars (ages 7-9)
Tue. & Thu., 4-5pm

Tournament Tough (ages 13-15)
Mon. & Wed., 4-5:15pm

Team Connecticut
Mon. & Wed., 5:15-6:30pm
For competitive junior players

High School
Boys- Fri., 3:30-5pm
Girls- Sat., 9-10:30am



Adult Programs

Drop in to our fitness, pickleball and tennis programs!

Strength & Balance
M/W/F, 10am

Drop-in Pickleball
Mon., 1-3pm, Beginners welcome

Stability Ball
Mon., 8am

Adv. Beginner Tennis Drills
Tue., 9-11am

Yoga
M/W, 11am

Intermediate Tennis Drills
Mon., 10:30am-12pm

Circuit Training
T/Th/Sa/Su, 8am

NTRP Tennis Drills
Sat., 10:30am-12pm, All levels

Cardio & Strength
Fri, 8am

Cardio Tennis
Wed., 6-7pm, All levels



Learn more:
(860) 739-6281
www.lymeshores.com

LYME SHORES
TENNIS & CONDITIONING CENTER

22 Colton Road
East Lyme, CT 06333

NIANTIC ACUPUNCTURE & FAMILY WELLNESS



Serving my community:
Providing Family Holistic Healthcare

Maggie Barili, RN, LAc Dipl.Ac
Registered Nurse ♦ Herbalist
Board Certified & Licensed Acupuncturist

Specializing in preventive medicine, mental health, physical and emotional disorders of stress, women's health, gastro-intestinal disorders, pain, palliative care and more.

369 Main Street ♦ Niantic, CT 860 451-5558
maggie@nianticacupuncture.com

Events

MAGAZINES



Old Lyme Events

TM Ventures, LLC
dba Essex Printing & Events Magazines

18 Industrial Park Road, P.O.Box 205
 Centerbrook, CT 06409
 860-767-9087 Fax 860-767-0259
 email: print@essexprinting.com
www.essexprinting.com

Publisher
 William E. McMinn

VP Marketing & Business Development
 Fred Holloran

Director of Advertising/Operations
 Suzanne Spire
suzanne@essexprinting.com 860-391-5534

Coordinator/Art Director
 Kathy Alsop
kathy@eventsmagazines.com 860-391-4372

Finance Manager
 Donna Everts

Cover Editor
 AC Proctor 860-767-9087

Sales Representatives
 Ward Feirer
wfeirer@gmail.com 914-806-5500
 Betty Martelle
betty@eventsmagazines.com 860-333-7117

Magazine Layout
 Amy Bransfield & Patricia Stenbeck

Cover Photo by AC Proctor

www.eventsmagazines.com

217,000 READERS
14 TOWNS EVERY QUARTER

Copyright © 2013 Events Magazines. All rights reserved. No part of this publication may be reproduced or transmitted in any form or by any means, electronic or mechanical, including photocopy, recording, or any information storage and retrieval system without written permission. Not responsible for omissions or typographical errors. All advertising material created by Essex Printing and Events Magazines is to be considered proprietary. Essex Printing and Events Magazines reserves the rights and license to all ad designs and photographic images produced by Essex Printing and Events Magazines. Reproduction rights for individual use in other publications is offered and available by purchase directly through Essex Printing and Events Magazines. Editorial appearing in this magazine is submitted by municipal agencies and other approved sources.

Town Clerk's Office

Congratulations!

We congratulate the following on their recent marriages:

Edward Francis Hackett III & Nicole Colburn - April 20
 Arthur Paul Kiritsis & Yasmin Mary Colon - May 10
 John Thomas Scanlon III & Nina Marie Wendel - May 24
 Jamie Christopher Curley & Rebecca Erin Latham - May 25
 Michael Lesley Lilburn Jr. & Adrienne Diane Candela - May 25
 Keith Stephen Lukasiewski & Katharine Young Healy - May 31
 Mark Andrew Kus & Lori Ann Knight - June 7
 John Patrick Spratt & Melissa Carol Ostering - June 21
 William Thomas Christopher & Marilyn A. Jacobs - June 21
 William John Hurtle & Jennifer Whitney Tiffany - June 21
 Tyler Clark Lipp & Katherine Abigail Arnold - July 12
 Jacob Allen Wells & Shaina Elise Kus - July 14
 Igor Lobo Goncalves & Arisneide Queiroz Digby - July 28
 Jared H. Meekhoff & Whitney Elizabeth Hutchinson - August 2

With Sympathy

We would like to express our condolences to the families of recently deceased Old Lyme residents:

| | |
|------------------------------|-----------------------------|
| Angela R. Beskin | Thomas Joseph Hesselman Sr. |
| Anna Chiarenza | Anthony Licitra |
| Mary Kay Conover | Brett Wayne McKenna |
| Henry Michael DeMazza | Charles Francis Miles, Jr. |
| C. Heather Wright Dillenbeck | Ruth Congdon Oppelt |
| Susan Foote | Mary Rose Reiher |
| Margaret Paula Fravel | Advah Holland Reynolds Jr. |
| James T. Gallagher III | Carolyn Ruth Sosnoski |
| Richard George Gauthier | Diane Eleanor Varley |
| Carl Gerr | Bettye Lambert York |
| Elizabeth Marcella Goucher | |

— Eileen K. Coffee, Town Clerk,
 Vicki Urbowicz, Assistant Town Clerk

Flu Shots

**Seasonal Flu Clinics will be held for
 Old Lyme: Saturday, October 25th from
 9:00 am-12:00 pm. Lymes' Senior Center
 26 Townwoods Road**

No appointment is necessary. The clinic will service residents of Old Lyme who are 50 years and older. In addition it will also service residents 19-49 years of age with a chronic medical condition and a doctor's note. No insurance or Medicare required. There is no set fee; donations are appreciated. To schedule a visit for homebound residents, please call 860-434-7808.

www.TeamJermainne.com



It's hard to believe we're already half way through 2014. We've been busy, busy, busy - Helping both sellers and buyers. Hey - it's what we do. And here's what they have said about how we do it....

"Honestly, we have bought and sold houses before our current one and doing business with you was the best experience of any." P.W. & D.W., Old Saybrook, CT

"You were ALWAYS available, you went above and beyond! Thank you." C.B., Old Saybrook, CT

"I feel your service and follow-up were fantastic! I have already recommended you to others." D.S. & K.S., Clinton, CT

"Your friendly and honest approach is a welcome relief. You are the best Realtors we have dealt with (in over 20 Years)." W.M., Old Saybrook, CT

"Brian made the purchase of our home stress free, he's efficient, organized and a very caring person! I would definitely recommend TeamJermainne to anyone purchasing a home!" C.S. & W.S., Old Saybrook, CT

"You guys are the best!" S.W. & M.W., Old Saybrook, CT

Call, Text or Email Us We're Here to Help.

Brian Jermaine, ABR, ASR, CRS, ePRO, GRI, SRES, SRS
Broker/Owner
Brian@TeamJermainne.com

Leslie Jermaine, ePRO
Realtor
Leslie@TeamJermainne.com

860-662-0230

CALL OR TEXT

 Follow us on Facebook at: www.facebook.com/TeamJermaineRealEstate





BUY AHEAD PROGRAM

2014-2015 Heating Season



| 1000 gallons or more (price break) | Pay by Credit Card | Pay by Check |
|---------------------------------------|--------------------------|--------------------------|
| \$3.67 Per Gallon | \$3.74 Per Gallon | \$3.69 Per Gallon |
| 600min | \$2,224.00 | \$2,214.00 |
| 700 | \$2,618.00 | \$2,583.00 |
| 800 | \$2,992.00 | \$2,952.00 |
| 900 | \$3,366.00 | \$3,321.00 |
| 1000 | \$3,720.00 | \$3,670.00 |
| 1200 | \$4,464.00 | \$4,404.00 |

Cap & Budget Programs Available ( call office for further information)

*Larger Discounts Available for Group Purchasers
(10 or more close-by friends, neighbors, etc)
and for deliveries more than 2000 gallons!*

ATTENTION

The state of Connecticut has passed new legislation:
**No Oil Dealer Can Sell Pre-Paid Oil
 from November Through March!**
Don't Put It Off... Reserve Your Oil Today!
 OUR DAILY FUEL OIL PRICE IS ON OUR WEBSITE:
www.moronioil.com

447 Spencer Plains Road · WESTBROOK CT 06498
860 388-2298 • FAX: **860 388-5557**

- Automatic Fuel Oil Delivery
- Burner Installation
- 24-Hour Emergency Service

A FAMILY BUSINESS SERVING FAMILIES



THREE GENERATIONS, OVER 67 YEARS OF CONTINUOUS AND RELIABLE HEATING OIL DELIVERY

Town Assessor

Assessment Date of Taxable Property in the Town of Old Lyme is **October 1st**. The Town of Old Lyme has complied with the provisions of Section 12-41 of Connecticut General Statutes. It is no longer necessary for persons liable for taxes of Real Estate and Automobiles registered with Connecticut Motor Vehicles Department to file Tax Lists with the Assessor annually as covered under Section 12-42 of the General Statutes.

Owners of tangible Personal Property, other than registered automobiles, such as commercial furniture, machinery and equipment, leased equipment, **unregistered automobiles**, camp trailers, etc., must file personal property list with the Assessor annually during the month of October. Failure to file prior to **November 1** forces the Assessor, by law, to file the list and add a 25% Penalty (Sec. 12-42, PA 87-245).

Totally Disabled Persons, if they meet the requirements of Section 12-81(55) of the General Statutes, are eligible for the \$1,000. Exemption upon submission of proof of such a disability by **October 1**.

Any individual who is **blind** is entitled to an exemption under Section 12-81(17) shall provide proof to the Assessor and must file by **October 1**.

Ex-Servicemen claiming statutory exemption, because of physical disability, in addition to regular exemption must submit exemption certificate from the Veterans Administration annually to prove claim.

Veterans must have filed this discharge (DD214) in the Town Clerk's office by, on or before **October 1** in order to receive exemption. Section 12-81(g) provides for an increase in the property tax exemption amount granted to a qualified veteran if certain income requirements could be met.

Persons on active duty must present to the Assessor (Sec. 514) of the Soldiers and Sailors Act or a letter from their Commanding Officer stating date of entry and they are on active duty. Any service person on active claiming Connecticut as their legal residence is entitled to one car exemption if the car is garaged out of State.

An application for property owners claiming land as farm, forest or open space should file an application **before October 31**. The only exception is during a revaluation year, when the deadline is extended to **December 30, WHICH IS THIS YEAR**. No other extension of the filing period is available, and failure to file within the prescribed time period is a waiver of the right to the classification for the assessment year commencing October 1st.

List must be filed at the Assessors Office, 52 Lyme Street, Old Lyme, and Connecticut 06371. **Office hours are Monday through Friday, 9:00 am to 4 pm.**

Walter E. Kent, Jr. CCMA II, Assessor



SHORELINE SANITATION

*Old Lyme's Septic
System Service Provider*

- Septic Tank Pumping
- Septic System Repair
- New System Installation
- Septic Inspections/Realty Transfers



CT License #002261



7 Day Emergency Service

Visit our website:

www.shorelinesanitation.com

Call today for a Free Estimate

860-434-0052

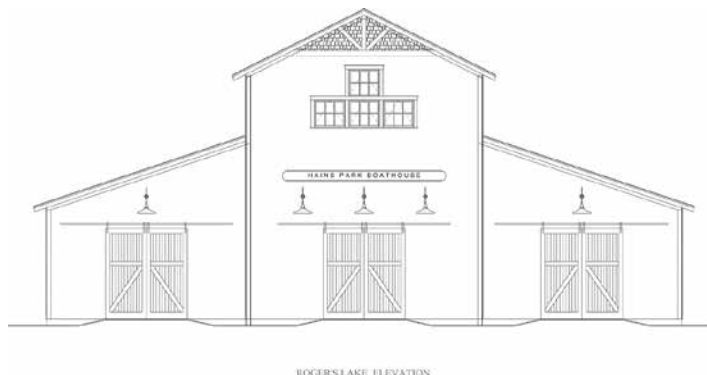
Serving Residential/Commercial & Industrial Customers Since 1978

Boathouse/Hains Park Project

In January 2014, the Board of Selectmen appointed an eight-member Boathouse/Hains Park Improvement Committee in response to their receipt of a \$478,000 STEAP Grant to enlarge the Emerson Boathouse and make associated improvements to the Park. Continued growth of the high school and community rowing programs over the years has resulted in boat storage requirements far exceeding the capacity of the existing structure, and the design concept defined in the grant application called for the boathouse to be reconfigured from one narrow bay and one wide bay into three 22-foot wide bays. At 22-feet, each bay will be wide enough to accommodate storage of sweep or sculling boats on each side of an access aisle, with sufficient room for safe movement of boats to and from the racks.

After reviewing proposals from twelve design firms and interviewing four, the Committee retained the services of Nina Cucio Peck Architects and BSC Group of Glastonbury in May. Since then, the group has been working rapidly to complete the documentation required to receive necessary approvals from the Planning Commission and the Zoning Board of Appeals.

The Conceptual Design and Design Development phases are now complete, and since the STEAP Grant will not be



sufficient to fund the entire project, the group is finalizing options for consideration when they request additional funding at an upcoming Town Meeting. Full plans call for three boat storage bays, oar storage, coaching equipment and gear storage, men's and women's toilet rooms and changing rooms on the first floor with second floor space for ergometers and video review/coaching. The options being developed will adjust various building design features and finishes based on material and labor pricing being collected and evaluated now.

The yearly rowing activities extend from mid-March through mid-November, which leaves only four months for demolition

continued on page 17

Shoreline Overhead Door



Family Owned and Operated for 28 Years

Paul Dorothy Jr.
MANAGER

Sales • Service • Installation
Garage Doors and Openers
Repairs on All Makes and Models
Authorized Lift Master
Garage Door Opener Dealer

150 Boston Post Road, Old Lyme, CT 06371

860-434-1179

860-395-5544

860-669-3555

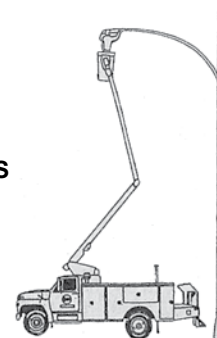
Shorelinedoor@sbcglobal.net



ZELEK ELECTRIC CO.



- BUCKET TRUCK SERVICE
 - MOTOR CONTROLS
 - LANDSCAPE LIGHTING
 - TELEPHONE WIRING
 - GENERATOR INSTALLATIONS
 - SALES & SERVICE
 - UNDERGROUND WIRING
 - FIRE ALARM SYSTEMS
 - LIGHTING CONSULTANT
 - TROUBLE SHOOTING
 - SOLAR ELECTRIC SYSTEMS
- CT LICENSE #103314



RESIDENTIAL • COMMERCIAL
MARINE • INDUSTRIAL

*"BIG ENOUGH TO DO THE JOB,
SMALL ENOUGH TO CARE"*

860-434-9726

OLD LYME, CT www.zelekelectric.com

• *Boathouse continued from page 16* •

and reconstruction of a functional facility. The Committee's goal is to bid and contract the work in time for a start this fall; this is an extremely aggressive schedule, but they have met all critical milestones to date. For more information on the Hains Park Project, please visit the following website: <http://www.hainsparkproject.org/>

Please contact either of the co-chairmen with questions or suggestions: Paul Gianquinto at pagianquinto@gmail.com, or Paul Fuchs at paul@pfna.com.

Lyme-Old Lyme Chamber of Commerce Fall 2014

Join the fun this fall when many, many visitors will come "through the looking glass" for the Florence Griswold Museum's *Wee Faerie Village in a Steampunk'd Wonderland*. Chamber members will welcome all with own own faerie displays, aptly titled: **Beyond Wonderland**.

Old Lyme was a magical place to be last fall when the Oz theme was virtually everywhere. From Emerald City martinis to life-sized characters on the College lawn and Munchkinland at the Fresh Ayer Gallery, the excitement was palpable. We expect Alice & friends to generate just as much enthusiasm.

Chamber members gathered informally over the summer for cocktails and delicious treats at Old Lyme Inn and Bee & Thistle.

Please join us this fall for dinner meetings:

September 17, 6 pm at the Shoreline Community Center on Hartford Avenue – celebrating the Charles W. Morgan's 38th voyage.

October 15, 6 pm at The Hideaway Restaurant – come meet new Connecticut College President (& LOLHS alum), Katherine Bergeron.

November 19, 6 pm at The Hideaway Restaurant – find out more about our College's new association with the University of New Haven.


As always, look for more info on our website at www.VisitOldLyme.com. Remember that Chamber meetings and events are open to members, prospective members, friends of members...all are welcome. Please join us – and don't forget to BUY LOCAL!

Cathy Frank, President, Lyme-Old Lyme Chamber

Town Offices

52 Lyme St, Old Lyme, CT 06371
Ph: 860-434-1605 • Fx: 860-434-1400

Town Hall Hours:
Monday - Friday: 9:00 - 4:00



147 Boston Post Road
Old Lyme, CT 06371
M-F 7 am - 5 pm ~ Sat 7 am - 12 noon
860-434-2265
www.allproautomotive.com



Old Lyme Shopping Center
Exit 70 off I-95, Halls Road, Old Lyme
860-434-1455 or 860-434-3335

Serving Sunday Breakfast
10 am-3 pm
Lunch Specials 11-3
At the Bar \$5 Lunch \$1 Drafts

**50%
ANY
ENTREE!**

Buy One Entree at Regular Price, Get 2nd of Equal or Lesser Value 50% Off With this coupon. One coupon per table. Excludes tax and gratuity. Not valid with other offers or on holidays. Expires 10/15/2014

**\$10
OFF
TOTAL
BILL!**

Of \$50.00 Or More With this coupon. One coupon per table. Excludes tax and gratuity. Not valid with other offers or on holidays. Expires 10/15/2014

**\$5
OFF
TOTAL
BILL!**

Of \$25.00 Or More With this coupon. One coupon per table. Excludes tax and gratuity. Not valid with other offers or on holidays. Expires 10/15/2014

**THURSDAY NIGHT
"WING NIGHT!"**

Steaks • Seafood • Pasta • Sandwiches and More!

Lyme's Senior Center

All programs are free unless otherwise noted

- **Financial Health Check-Up** will be held on Thursday, October 9th & November 13th. Retired financial professional, Diana Melville, CLU, ChFC will be available to help answer your questions about money management, investments, insurance and more. To make a free confidential appointment, call (860) 441-6785.

- **Review your Medicare choices** in a free, one-hour appointment. Lynn Wynn, Choices Counselor, will be available to go over your options at the Senior Center on September 16th, 23rd, 29th or 30th from 9-12 pm. To sign up for an appointment, please call (860) 434-4127.

- A **Four Week Memory Enhancement Seminar** will be held on Tuesday, September 16th, 23rd, 30th, and on October 14th. No sign-up is required. Topics that will be addressed in this four week session: Health habits to improve memory; Normal brain aging, Strategies, guidelines, and techniques to maintain/improve memory; Brain exercises and tips to improve memory; Mindfulness and memory; Recalling well-known information; Memory Problems that are not part of normal aging and much more!

- **Popcorn and a Movie of the Month: Quartet** on September 19th at 12:45 pm.

- **Chelsea Players Broadway Cabaret** on Tuesday, September 23rd at 7:00 pm. Come enjoy a special evening of Broadway show tunes from the 20th century!

- **Nonagenarian Tea & Photo Session** will be held on Wednesday, September 24th at 1:30 pm. We would like to celebrate those who are ninety years of age and up! Individual photos will be taken, framed, and hung on the wall in the main room. To register, please call Stephanie at (860) 434-4127.

- **"What you Need to know about Diabetes"** will be presented by The Visiting Nurses of the Lower Valley on Friday, September 26th at 1:00 pm.

- **David Littlefield**, who has made appearances with the quartet "Forebitter" on *Good Morning America*, The Food Network, and The History Channel, will perform both traditional and contemporary maritime music for us on Wednesday, October 1st at 1:30 pm. This program is sponsored by the Senior Club.

- **The History of the Nehantic People** will be presented by Richard Waterman, retired teacher and history buff on Friday, October 3rd at 1:00 pm.

- **"How to Grow Your Money Safely"** will be presented by Vince Martino, a Certified Financial Planner with the Barnum Financial Group. This informative session will be held on Tuesday, October 7th at 1:00 pm.

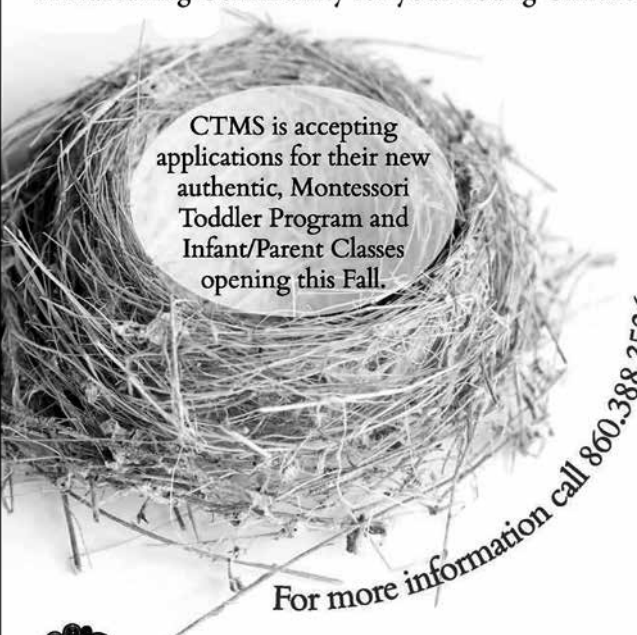
- **"From Hula Hoops to High Fashion: G. Fox Co. in the 1950s."** This lecture, presented by the Connecticut Historical Society, will be held on Wednesday, October 8th at 1:00 pm.

- **Genealogy for Beginners Workshop** will begin Thursday,

continued on page 19

Our Tree now has a "Nest"

A Nurturing Community for your Young Children



CTMS is accepting applications for their new authentic, Montessori Toddler Program and Infant/Parent Classes opening this Fall.

For more information call 860.388.3536



Marci Martindale / Head of School
860.388.3536/ marci@childrenstree.com
96 Essex Rd, Old Saybrook, CT
www.childrenstree.org

LAYSVILLE HARDWARE

A Complete Line of Hardware & Paint Supplies

Power Tools • Diesel • Lawn & Garden Supplies
Gas Grills • Electrical & Plumbing Supplies
Builder's Hardware • Blades Sharpened
Glass Cut & Window Repairs

Rentals: Power Washers • Paint Sprayers • Rug Shampooers

860.434.7727

171 Boston Post Rd, Old Lyme

Sign up for savings
with our E-Newsletter
@

laysvillehardware.com



• *Senior Center continued from page 18* •

October 9th at 11:00 am. This workshop will be led by Russell Degraft, longtime genealogical researcher and a member of the Connecticut Society of Genealogy, New England Historical Genealogical Society, and Textile Workers of America. It will meet twice a month. This workshop is for beginners only and is free for all members. Please call (860)434-4127 to sign up.

- **Popcorn and a Movie of the Month:** *Argo* on Friday, October 17th at 12:45 pm.

- **Our Second Annual Veteran's Luncheon** will be held on Tuesday, October 21st at 1:00 pm. Please call (860) 434-4127 by October 10th if you have served in our armed forces and would like to attend.

- **"Is this Trip Necessary?"** will be a lecture on outhouses presented by Virginia Williams on Tuesday, October 28th at 1:00 pm.

- **AARP Drive Safety Class** will be held on Wednesday, October 29th from 1:00 pm- 5:00 pm. Call (860) 434-4127 to sign up. Cost is \$15 for members/\$20 for non-members.

- There will be a presentation on **Arthritis and Home Safety** on Tuesday, November 4th at 1:00 pm with Deborah Ringer RN from the VNA of Lower Valley.

- **Braiden Sunshine**, a student and talented musician at Lyme-Old Lyme High School, will be performing on Wednesday, November 5th at 1:30 pm.

- **"Pushing Past "No": Overcoming Obstacles on the Path of Success"** will be presented by the Connecticut Women's Hall of Fame on Wednesday, November 12th at 1:00 pm.

- **Our Thanksgiving Luncheon** will be held on Thursday, November 20th at 12:00 pm. Entertainment will follow. Sign up is required by November 6th. Call (860) 434-4322 after October 31st to sign up.

For more information on these programs and to become a member, please call Stephanie Lyon at (860) 434-4127.

Social Service News

The State of Connecticut, Department of Social Services provides a broad range of services to the elderly, people with disabilities, families, and individuals who need assistance in maintaining or achieving their full potential for self-direction, self-reliance and independent living. In order to receive services through the Department of Social Services, you will need to apply. This process can be overwhelming or difficult if you don't have access to the internet.

Many of these forms are available to apply for programs in the Social Service office at the Old Lyme Town Hall. Old Lyme Social Services offers help with information, paperwork and documentation processing for many of the State and Federal programs available to residents. Old Lyme Social Services will act as an advocate for any Old Lyme resident and will make appropriate referrals to agencies and programs to help meet their needs. For more information or to schedule an appointment, please contact; Valerie Goncalves, Social Service Coordinator at 860-434-1605 Ext. 228, or by email: vgoncalves@oldlyme-ct.gov. Office hours are available in the town hall Tuesday & Wednesday from Noon to 4 pm; and Thursdays 9 am – 1 pm.

Appointments for Energy Assistance and Renters Rebate are available now.

You're Busy.

WE GET IT.

With over 1,800 locations open 24/7, you too can be a busy parent or grandparent and still get healthy.



First Class
FREE

Call club for details.

17 Liberty Way
Niantic, CT 06357
860-691-1611
anytimefitness.com



BALLEK'S GARDEN CENTER



Plan Now For Your Fall Plantings!

FULL SERVICE GARDEN CENTER

Great Selection of Annuals, Perennials, Trees & Shrubs

FULL SERVICE FLORIST

Gardening Gifts, Fresh Cut Flowers, Bloomnet

LANDSCAPING

Walls, Walks, Patios, Tree and Garden Installation

OPEN YEAR-ROUND

860-873-8878

Maple Avenue, East Haddam, CT
www.BalleksGardenCenter.com



BABIES FIRST - Mondays 9:30-10:40, starting September 8th, ongoing. Fee: \$40/5 weeks sessions. For new and expecting moms, or parents of children up to 12 months. Join us for social time and parenting discussions. Weekly topics of interest and guest speakers include issues and concerns commonly found during the first year of parenthood. Meeting in the casual and child friendly atmosphere of Mimi's Place at LYSB, nursing moms and diaper changing always welcome! Pre-register by calling LYSB 860-434-7208 x0.

PLAYGROUPS AT LYSB: Ones and Up: Tuesdays 9:30-10:40 am. Mixed Ages: Wednesdays 9:30-10:40 am. Two's and Up: Thursdays 9:30-10:40 am. Sensory Playgroup: Thursdays: 11:00-11:45 am. Infant and Baby Massage: tba.

Children (with their parent/caregivers) will gain social and literacy skills while enjoying circle time, free play, snacks, crafts and outdoor time at Mimi's Place adjacent playground. Siblings always welcome. Each week the groups will explore a new theme. New Sensory Playgroup on Thursdays will explore the senses! Squish, rattle, explode & roll...and leave the mess with us! Fee: \$40 per five week session. Pre-register by calling LYSB 860-434-7208 x0.

MUSIC WITH MARGIE. Wednesdays, 10:45-11:15 am. This fall our music classes are free due to a generous donation. Music with Margie is a "joy-based" music and movement preschool program for young children based on the simple truth that children learn and retain knowledge through PLAY! By teaching in a multi-sensory fashion, using music, rhythm, and rhyme, children gain the skills they need for kindergarten in a setting of relaxation and fun. Enthusiastically performed, written, and taught by Connecticut-born Margie Warner. Weekly topics include everything from families to weather to dinosaurs – all in a fun, safe environment. Margie is a member of both ASCAP and the Connecticut Storytelling Center. Pre-register by calling LYSB 860-434-7208 x0.

YOUTH ADVISORY COUNCIL (YAC). Every Wednesday 7:00-8:00 pm. YAC is a high school community service club that participates in a variety of fun projects and activities throughout the year. All high school students in L/OL are welcome to join us any Wednesday night! For questions call 860-434-7208 x0. Just show up, fun is guaranteed!

MIDDLE SCHOOL AFTER SCHOOL PROGRAM. Meets Tuesdays and Thursdays from 2:15 to 4:00 pm. Come hang out

continued on page 21

Pilates for Life
The Tradition and Method of Joseph Pilates

Joseph H. Pilates, originator of **Pilates Method**... trained **Romana Kryzanowska**, Master Teacher NYC... Romana trained **Marlene Powers**, let Marlene train you in the true tradition...

Fitness and Flexibility
Alignment and Posture
Deep Core Strengthening
Physical Therapy Compliment

Mat Classes
Private Equipment Instruction
Beginner to Advanced


Certified Instructor
Over 900 Training Hours

Marlene Powers
www.inspiredbypilates.com
email: info@inspiredbypilates.com



2010 and 2013
Readers Choice
Best Pilates Studio

26A Saybrook Road
Essex, Connecticut
860-227.5790




Scholes Insurance Agency, since 1921
a division of Bouvier Insurance

Now Located at Old Lyme Market Place
PO Box 508
Old Lyme, CT 06371

Gretchen Battey Makowicki
Senior Account Specialist
860-767-8219
Fax 860-767-2409
gmakowicki@binsurance.com

An Essex resident, proudly serving the Essex, CT community since 1983
Visit: Binsurance.com



• *Youth Service Bureau continued from page 20* •

at LYSB and participate in a variety of crafts, games, and fun activities. Students can walk to LYSB after school and passes for the Late Bus will be provided. This is a drop in program open to any LOLMS student. Registration fee of \$30 and permission form required, available on our website www.lysb.org.

ELEMENTARY AFTER SCHOOL CLUB. Every Wednesday 3:00 to 5:30 pm. For grades 2-5. Come to LYSB's Activity Center with your friends to play games, enjoy crafts, snacks, and more. Fun is guaranteed!! Students from Center School will be escorted to LYSB. Students from Mile Creek & Lyme Schools will take the bus directly to LYSB. Fee is \$125 for the year. Pre-register by calling LYSB at 860-434-7208 x0.

ENGINEERING FUNDAMENTALS WITH LEGOs. AFTER SCHOOL PROGRAM: Grades K-6: Tuesdays 4:00-5:30 pm. Design and build motorized machines, catapults, pyramids, demolition derby cars, truss and suspension bridges, buildings, and other constructions. Explore real world concepts in physics, mechanical engineering, and architecture while playing with your favorite creations. An experienced instructor will challenge new and returning students to engineer at the next level. This is a hands-on and minds-on class suitable for LEGO® novices to "maniacs." Contact 860-434-7208 x0 or visit our website www.lysb.org for details.

CASFY: Community Action for Substance Free Youth. Meets the First Tuesday of the month at LYSB at 7 pm. CASFY is the prevention coalition for Lyme and Old Lyme and our

goal is to reduce substance use among youth through a variety of strategies. We are fortunate to have a strong group of citizens who care about this issue. Please join us at an upcoming meeting. Newcomers are most welcome! To learn more about our work, visit www.lysb.org and click on CASFY.

DRUG TAKE BACK DAY. Saturday, September 27, 10-2 at Lyme Street Fire House. National Prescription Drug Take-Back Day is a great opportunity for you to safely dispose of unwanted and unused prescription drugs. Abuse of prescription drugs is on the rise both nationally and locally. Let's keep these drugs out of the wrong hands. Drop off your medications at the fire house and we will safely dispose of them. Co-sponsored by LYSB, CASFY and Old Lyme Police.

CHANGE HAPPENS: a program for children of divorce. Wednesdays, 4:30-5:30 pm, starting in October. Change Happens is LYSB's program for children and adolescents whose families are going through divorce, separation, remarriage, and custody issues. This program was designed to assist children through the continuum of family reorganization, change or upset. We will address self-esteem, issues of loss, communication and transition. Hands on activities will help young people express themselves. All young people who are managing the emotions and hurdles of family transitions will benefit from this program which will be held at LYSB and led by a licensed clinical social worker. Fee: \$90 for six week sessions. Pre-register by calling LYSB at 860-434-7208 x0. All calls are confidential.

DUCT TAPE WORKSHOP for Middle Schoolers. Monday, October 29th, 2:15-4:00 pm. Open to all LOLMS students.

continued on page 22

TRUST YOUR CAR TO THE REPAIR SHOP MORE PEOPLE TRUST...

We are a full service garage dedicated to quality work and service.

"The Only Call You Need For Quality Service & Repairs"

AUTO SERVICE
of
Old Saybrook, Inc.

Servicing Domestic & All European Cars Including Mercedes, BMW, Jaguar, Audi, Saab, Volvo & VW

860-388-6838



We employ ASE Certified Technicians



From oil changes & scheduled maintenance to engine repair or replacement, we can provide complete mechanical & electrical service to your vehicle.



4 JADE COURT • OLD SAYBROOK
HOURS: MON. - FRI. 8 a.m. - 5 p.m.





*Old Lyme
Visiting Nurse
Association, Inc.*

*At time of hospital discharge or
whenever in need of homecare
services, please call*

860-434-7808

or

860-434-9003

*Homecare license via Interim
Health Care of Eastern Connecticut*

• *Youth Service Bureau continued from page 21* •

Walk to LYSB after school and make a DIY duct tape projects to bring home! Late bus passes will be issued. Fee: \$10. Call LYSB at 860-434-7208 x0 for more info.

LYSB HALLOWEEN PARTY & COSTUME PARADE. October 31st, Party: 5:00-6:00 PM, Costume Parade: 6:15 pm. A free fun family event including games, crafts, storytelling, face painting, and more! For children ages 12 months through 2nd grade. All “little goblins” must be accompanied by an adult. The costume parade will leave the Old Lyme Firehouse at 6:15 pm. March down Lyme Street behind a fire truck! Did you know that LYSB distributes donated candy to our neighbors in the Village in advance of Halloween? If you would like to donate unopened bags of candy for trick-or-treating, please drop off at LYSB or the Town Hall by October 27th.

SITTER SAFETY CLASS. Four Mondays: November 10, 17, 24 & December 1, 2:15 to 4:00 pm. An intense sitter safety and training course appropriate for babysitters, big brothers and sisters, and children staying home alone for the first time. This course touches on a variety of safety skills such as basic first aid, fire safety, and 911 skills. Fee is \$40 and includes supplies, snacks, and guest speakers. Call LYSB to pre-register at 860-434-7208 x0.

CPR FOR BABYSITTERS. Monday, December 8, 2:15-3:45 pm OR Monday December 8, 4:00-5:30 pm. Add this valuable class to your LYSB babysitter’s course and learn how to save a life! Learn CPR and how to clear a blocked airway in children and infants. Parents want to hire babysitters who know CPR and can help kids who are choking. Instructors will teach you everything you need to know to provide lifesaving care during a cardiac or choking emergency in this 2-hour class. Class cost is \$45 and awards a Certificate of Completion. Contact LYSB to pre-register at 860-434-7208 x0.

MOTHER/DAUGHTER WORKSHOP. Tuesday, November 11, 6:00-8:00 pm. Open the lines of communication with your daughter! Designed to give girls a better understanding of the changes that her body will go through during puberty. Topics will include the importance of a positive body image and how to deal with difficult situations. A fun and educational night out for girls in 4th and 5th grade and their mothers. Cost is \$45 per pair and includes resource materials, goodie bags and a pizza dinner. 860-434-7208 x0.

LYSB HOLIDAY PARTIES. Sunday, December 7th, 5-7 pm. This fun event brings together neighbors to celebrate the start of the holiday season, while raising funds for LYSB. Thirty simultaneous parties in Lyme and Old Lyme. If you are interested in hosting a party in your neighborhood, or helping on our committee, please contact LYSB at 860-434-7208. If you have never received an invitation to our Holiday Parties, we want to include you so please call us to share your info.

GINGERBREAD HOUSE FAMILY WORKSHOP. Sunday, December 7th, 12:30-2:30 pm. An LYSB tradition! Your family will make your own Gingerbread House to take home. Leave the mess with us. We supply all the ingredients. Bring your camera. \$10/house. Pre-register by calling 860-434-7208 x0.

AMERICAN GIRL HOLIDAY TEA. Saturday, December 13th, 10:00 a.m. to 12:00 noon, Fee: \$20, for Ages 5 and up. It’s time for LYSB’s annual American Girl Tea. You’ll create festive holiday crafts and have a traditional tea party with china cups and tea cakes! Time for party games and stories too. Call LYSB to register 860-434-7208 x0.

HELPING HANDS. Monday, December 15th, 2:15-4:00 pm. For middle schoolers. Lend a helping hand to others in our community during the holidays. We will complete a holiday based community service project. Pre-register: 860-434-7208 x0.

BABYSITTING DAY. Saturday, December 20th, 9:00 am to 1:00 pm. Let the elves at the LYSB watch your kids while you finish your holiday errands. For children of all ages. Will be entertained by members of the LYSB Youth Advisory

continued on page 23

Exencial
Wealth Advisors™

Explore. Execute. Excel.



**Providing Planning, Leadership
&
World-class Investment
Management**

Thomas P. McGuigan, CFP®
tmcguigan@ExencialWealth.com

Jean A. Wilczynski
jwilczynski@ExencialWealth.com

www.ExencialWealth.com

187-B Boston Post Road, P.O. Box 623
Old Lyme, CT 06371
(860) 434-5999 · (888) 434-5999

Investment Advisory Services offered through Exencial Wealth Advisors, a SEC-Registered Investment Advisor.

• *Youth Service Bureau continued from page 22* •

Council. Cost is \$20 and includes lunch, crafts, games, snacks, movies and fun. Must register in advance by calling LYSB at 434-7208 x0. All proceeds benefit the Youth Advisory Council Scholarship.

YOGA FOR TEENS & ADULTS. Thursdays, 7pm – 8pm year round. Relax and restore your mind, body, and spirit. Wear comfortable clothing and bring a mat. \$10/class, drop in. Taught by Joanie Fitton.

JOB BANK. Do you need help with your lawn? Need a new babysitter? Have odd jobs waiting for attention? Call the LYSB Job Bank for names of area youth interested in working for you. (860-434-7208).

Kids who want to be listed in the Job Bank need to register at LYSB with a parental permission form available at www.lysb.org For middle and high school youth ages 12 to 18.

The Old Lyme-Lyme Volunteer Connection

September is back-to-school month and a great time for students and adults to consider adding some volunteer time to their weekly calendars. The Volunteer Connection lists a number of opportunities in education to work with people from school age to adults.

- The Lymes Youth Services Bureau can use volunteers in its after school programs.
- The Florence Griswold Museum can use educators to lead school-aged children on fun and informative student-focus tours and art projects in the Hartman Education Center.
- High Hopes can use volunteers in its Therapeutic Riding Program.
- The Young Adult Area and Children's Room of the Old Lyme Phoebe Griffin Noyes Library also needs volunteers.
- Literacy Volunteers is always looking for new tutors for students on their waiting list.
- The Mentoring Corps of Southeastern CT, a group of retired and experienced business people, reaches out to mentor promising students, non-profit organizations, and small businesses.
- The Old Lyme Education Foundation works to support and enhance public education in our community by raising and distributing funds to support programs.

There are many other types of opportunities listed. Please refer to the website for details volunteer.truist.com/ollvolunteer.

Noah Christiano, who founded the Old Lyme-Lyme Volunteer Connection in 2011 and has been managing it since, will be leaving for the University of Rochester this fall to study Computer Science. The management of the Volunteer Connection will be taken on by Sophie Christiano, a high school sophomore. If you are the leader of an organization that is either located in or provides services to Old Lyme or Lyme and would like a listing on the Volunteer Connection website, contact Sophie, at ollvolunteer@gmail.com.

MARK REEVES, BUILDER

860-388-3825

Let's Get Those FALL Projects Underway!

NEW HOMES

WHOLE HOUSE REMODELS

ADDITIONS

KITCHENS

BATHROOMS



BASEMENT CONVERSIONS

SIDING & WINDOWS

ENTERTAINMENT CENTERS

FLOORING

GENERAL REMODELING

MARKJREEVESBUILDER@COMCAST.NET

WWW.MARKREEVESBUILDER.COM

CT LICENSE # 538583 & 10263 FULLY INSURED



WESTBROOK: Enjoy Coastal Living at its Best! Beautiful Nantucket Colonial. Open Porches allow for marina/river/sound views. Home boasts of many energy and custom features. Asking \$639,000 (MLS9146044)

Betty Martelle

860-339-5251

cell: 860-333-7117

website: bettymartelle.com

33 Main Street
Old Saybrook, CT



WILLIAM RAVEIS

— REAL ESTATE • MORTGAGE • INSURANCE —

The Largest Family-Owned Real Estate Company in the Northeast

Old Lyme-Phoebe Griffin Noyes Library

2 Library Lane, Old Lyme, CT 06371 ~ 860-434-1684

It is easy to register for a program at the Library - visit www.OLDLYME.LIONINC.org, select the event of interest listed on the Events tab or call the Library at 860-434-1684 for assistance. New programs and events are posted monthly. You can sign up for our monthly E-Newsletter while on our site too.

ADULT EVENTS

Coming soon are new programs on genealogy, history, art and the return of "Red Carpet Movies!" For more details on each book or any program, visit our website.

PHOEBE'S BOOK CHATS: Thursdays, 11:00 am-12:00 pm: *Weekends with Daisy* by Sharron Kahn Luttrell, October 9. *Me Before You* by Jojo Moyes, November 13. *Beautiful Ruins* by Jess Walter, December 11.

EVENING BOOK DISCUSSIONS: CONTEMPORARY CLASSICS WITH MARSHA BANSAVAGE, Mondays, 7:00 pm: *The Good Lord Bird* by James McBride (2013 National Book Award Winner for Fiction), October 6. Reader's Choice, November 3. *Dear Life: Stories* by Alice Munro (Winner of the Nobel Prize in Literature 2013), December 8.

ADULT CLASSES

MAHJONGG CLASSES WITH JOANIE FITTON: Wednesdays, 12:00-4:00 pm. Beginners and experienced players welcome. Classes are in the Community Room. The cost is \$10 per person per class with checks made out to instructor Joanie Fitton. A portion of the fees go to support the Library.

All participants must register for their first class and pay in advance. Registrations accepted on a first come basis.

WATERCOLOR CLASSES WITH JOAN BERNARD: Class For Beginners: Tuesdays, 1:00-3:30 pm. Advanced Class: Tuesdays, 10:00 am-12:30 pm. NEW 6 Week Session Begins September 9. Each participant will have time to learn and receive feedback on their compositions and progress. Classes run on a continuous basis throughout the year. To register, contact instructor Joan Bernard at 860-388-1983. A list of materials needed is provided on the website. Fee: \$140 per person.

CHILDREN'S EVENTS

To register for Children's events visit www.OLDLYME.LIONINC.org under the "Children's Program" tab or call the Library at 860-434-1684. For more information on a specific event, or if you have an event idea for us, email the Children's Librarian, Michelle DeSarbo, at mdesarbo@oldlyme.lioninc.org.

SCHOOL PROJECT HELP! September through June by appointment. Project perfection has never been easier! Stop by, call, or email us and tell us about your assignment preferably three weeks before the due date. The more time we have to help you, the easier your work will be. Set up an appointment to visit us and we'll show you the best books, articles and websites on your topic. To get started, call 860-434-1684 and ask for Alex or Michelle or email them at ProjectHelp@oldlyme.lioninc.org.

TODDLERTIME: Mondays, 10:30 am. Two to five-year-olds will delight in listening to stories, singing songs, and making a themed craft. All this free fun takes place in the Community Room. Each program lasts approximately thirty minutes. No need to register - just drop in. (No class Columbus Day.)

DROP-IN BABY TIME: Thursdays, 10:15 am. Children ages birth through age two. Introduce your baby to the Library and meet new people! Activities include: sharing books, singing songs and finger plays, and then playtime and exploration with an optional simple craft. Each program lasts approximately thirty minutes. No need to register - just drop in. (No class Thanksgiving Day.)

CRAFTER SCHOOL: First Monday of every month, 3:00-4:30 pm. Make a themed craft the first Monday afternoon from September through December (9/8, 10/6, 11/3, 12/1). Materials provided. CrAfter School is for children in 3-5. Registration appreciated.

SWEET BEATS FAMILY MUSIC: Second Wednesday of every month, 5:30-6:15 pm. An evening of music and movement with Eleanor Robinson, owner and musician behind Sweet Beats Family Music! This series runs from September-December (9/10, 10/8, 11/12, 12/10). We sing, dance, and sway through Eleanor's varied musical repertoire. This free activity is perfect for families with children birth through age five. Registration appreciated.

LAUGH OUT LOUD CLUB (K-2): Tuesdays, September 9-30, 4:00-4:30 pm. Explore the silly world of picture books at the Library! Listen to tales of dogs skateboarding, a child waking up as flat as a pancake, and cows typing letters to their

AEGEAN TREASURES



Fall Clothing
Arriving Daily

Eileen Fisher Sweaters and Jackets

Cashmere Wraps and Sweater

Trimdin Jackets

Curio Sweaters

Julie Brown and
Jude Connally Dresses

49 Main Street, Essex, CT 06426
860.767.1688

continued on page 25

• *Library continued from page 24* •

farmer. Create harebrained crafts, sing ridiculous songs, and laugh out loud at the Library. All materials will be provided. Registration required.

BOOK VS. MOVIE BINGO: Thursday, October 16, 3:30-4:15 pm. Come to the Library and compete for awesome prizes at Books vs. Movie Bingo. We'll start by reading *Where the Wild Things Are*. Then, we'll play! You don't need to have seen the movie to win. (HINT: If a word, phrase, or character comes up that they didn't hear in the picture book, you know it came from the movie.) This activity is best suited for children in grades K-5. All materials will be provided. Hope to see you there. Registration required.

DECORATE YOUR OWN PUMPKIN: Thursday, October 23, 3:45-4:45 pm. Children in grades K-5 and their families are welcome to enjoy the Halloween-themed fun. We will provide the paint and pumpkins. Parental involvement is encouraged; this activity will be slightly messy. Registration required.

SPOOKTACULAR HALLOWEEN SCIENCE: Thursday, October 30, 3:45-4:45 pm. What happens when you combine soda, candy, and balloons? Do chocolate bars sink or float in water? How can you use common household items to make a spooky glow-in-the-dark potion? Come to the Community Room and find out with some hands-on, Halloween-themed science! Costumes welcome. All materials will be provided. Registration required.

TRICK-OR-TREATING ON THE LIBRARY LAWN: Friday, October 31, 6:00-8:00 pm. Boo! Stop by the Library lawn on your way down Lyme Street for some yummy Halloween treats—if you dare. Just stop by and say “trick-or-treat!”

MAGIC TREEHOUSE PARTY: Thursday, November 6, 4:00-5:00 pm. Fans of the series *Magic Treehouse*, get ready to party! This time, we'll be celebrating *Mummies in the Morning* by Mary Pope Osborne. We'll build our own pyramids, learn how to write our names in hieroglyphics, and compete to win prizes with our Mummy Wrapping game. This activity is best for children in grades 2-4 but all are welcome. Light refreshments will be served. All materials will be provided. Registration required.

TELLABRATION DRAMA WORKSHOP: THE MAGICAL TOY SHOP: Saturday, November 15, 3:00-4:30 pm. Come experience the magic of storytelling and theater with our FREE Tellabration drama workshop. Children ages 5-9 will hear the tale of *The Magical Toy Shop*, a place where enchanted toys secretly come to life while the shop owner sleeps through the night. After some theatrical warm-up exercises and a brief review of the story, participants will get into costume and rehearse. The workshop will culminate in a performance for parents, family and friends as well as a themed craft activity. All materials will be provided. Registration required.

NUTCRACKER BALLET STORY TIME: Thursday, November 20, 4:00-5:00 pm. Children ages 3-8 are welcome to attend this magical story time. Hear the spellbinding tale of Tchaikovsky's *Nutcracker* as dancers from the Eastern Connecticut Ballet reenact its most famous scenes through dance. Then, join the fun by taking part in a dance activity yourself. Take photos with the Sugar Plum Fairy and the rest of the *Nutcracker* cast

as a keepsake, and enjoy a special gift to take home with you. Registration required.

HOLIDAY COOKIE DECORATING: Thursday, December 18, 3:45-5:00 pm. Sugar, frost, and sprinkle the afternoon away with this fun craft. Kids in grades K-5 can come to the Community Room and pick out a sugar cookie, then add frosting and other edible decorations. All materials will be provided, so just bring you! Registration required.

YOUNG ADULTS EVENTS

To register for a Teen event visit www.OLDLYME.LIONINC.org under the “Teen’s Program” tab or call the Library at 860-434-1684. For more information on a specific event, or if you have an event idea for us, email the Teen Librarian, Alex Klaus, at aklaus@oldlyme.lioninc.org.

TEEN BINGO: Thursday, September 18, 3:30 pm. Back by popular demand! Teens and tweens join Miss Alex for some Bingo, prizes, and snacks. Recommended for kids in grades 6 and up. Registration appreciated.

BANNED BOOK WEEK MOVIE NIGHT: Monday, September 22, 3:00 pm. Film and video productions can vividly depict the impact of censorship on individuals and society. So we'll celebrate our first amendment rights by watching the movie “Footloose!” Snacks Served. Recommended for kids in grades 6 and up. Registration appreciated.

TEEN READ WEEK: BLACKOUT POETRY: Wednesday, October 15, 2:30 pm. In honor of Teen Read Week, OL-PGN will host a Blackout Poetry drop in craft for teens in grades 6-12. Learn how to turn book pages into artistic poems with nothing but a Sharpie and your mind!

MURDER MYSTERY AT THE LIBRARY: Friday, October 24, 5:30-8:00 pm. A night of mystery at the Old Lyme-Phoebe Griffin Noyes Library. Register to be a guest or an actor for a mystery at the Library after dark. A pizza dinner and a dessert provided. This event is for kids in grades 6 and up. Registration required.

TEEN SCENE IMPROV PARTY: Thursday, November 13, 3:00 pm. Do you love acting and improv games? If so, our improv party is for you! Even if you don't like the spotlight, you can crack up in our audience. The scene ideas, props and prompts provided as well as refreshments. Bring your friends and be ready to have fun. Registration appreciated.

TEEN MOVIE: TEEN'S CHOICE: Monday, November 24, 3:15 pm. Movie TBA – What do you want to watch? Help select this movie, email your movie idea to Miss Alex at aklaus@oldlyme.lioninc.org. Movie must be rated; G, PG, or PG-13 only. Snacks will be served.

TEEN ORNAMENT DECORATING: Friday, December 19, 3:15 pm. Looking for a personalized holiday gift to give? Decorate a glass ornament; share some hot cocoa with friends and chit-chat. Supplies provided, but limited. For kids in grades 6 and up. Registration required.


TEEN CRAFTS

BANNED BOOK CHARMS: Friday, September 26, 3:15 pm. Grades 6 and up. Registration appreciated.

DIY WHITE BOARDS: Monday, September 29, 3:15 pm.

continued on page 26

Bogaert
CONSTRUCTION CO., INC.
60 PLAINS ROAD, ESSEX, CT 06426
860.767.8072



- Custom Homes
- Additions
- Full Remodeling Services
- Custom Millwork
- Window Replacement

Fully Insured
New Home Lic. #170
Remodeling Lic. #523107
www.bogaertconstruction.com

• *Library continued from page 25* •

Supplies provided. Grades 6 and up. Snacks served. Registration appreciated.

PAPER BRACELETS: Friday, October 3, 3:15 pm. Grades 6-8. Supplies limited. Registration appreciated.

PAINTED ROCKS: Monday, October 20, 3:15 pm. All supplies will be provided, just drop in.

SPOOKY SHIRTS: Monday, October 27, 3:15 pm. Create a Spooky Halloween T-Shirt! Grades 6 and up. Supplies limited. Registration required.

PENCIL CROSS BOWS: Friday, November 7, 3:15 pm. Limit 15. Registration required.

DREAM CATCHERS: Monday, November 10, 3:15 pm. Supplies provided. Ages 12 and up. Limit 20. Registration required.

DESIGN YOUR OWN MUG: Thursday, December 4, 3:30 pm. Materials provided. Grades 6 and up. Registration appreciated.

FRIENDS OF THE OL-PGN LIBRARY BOOKCELLAR

Wednesdays: 10:00 am-6:00 pm & Saturdays: 10:00 am - 2:00 pm. A book lover's treasure trove of gently used books awaits you. Explore its stacks filled with hardcovers, paperbacks, music CDs, children's books and special sales. Classics, popular fiction, as well as travel, history, science, art and every other subject in Dewey's classification is waiting just for you! All books are in good condition and modestly priced with proceeds going to support the Library's services, collections and programs. (Donations accepted during Library hours.)

Old Lyme Visiting Nurse Association

Old Lyme Visiting Nurse Association Scholarships

This year eight graduating seniors shared the Old Lyme Visiting Nurse Association Scholarship: Kristina Cain, a Nursing/Health Science major at the University of Connecticut, Emily Czarnecki a Nursing major at the University of Connecticut, Jenna Duxbury a Health Science/Physician's Assistant major at University College Dublin, Chelsea Evankow a Nursing major at the University of New Hampshire, Erin Kroes a Health Science major at Endicott College, Brianna Landry an Occupational Therapy major at New England Tech, Ainsley McGill a Nursing major at Quinnipiac University, and Cole Turner a Nursing/Exercise Science major at Central Connecticut State University.

Emily Czarnecki and Chelsea Evankow were also the co-recipients of the Mary H. Noyes Memorial Scholarship. The Association congratulates all the awardees and wishes them success in their advanced studies.

Health & Wellness Day

The OLVNA's Annual Health & Wellness Day event will be held on Saturday, November 1st. This fair will include the participation of numerous health field professionals and service providers. There will be consultations with doctors, dentists, nurses, audiologists, nutritionists, and therapists.

Low cost blood tests are available from the L&M hospital lab, and the Yale-New Haven Hospital. Mammography Van is scheduled to be on site doing digital tests.

ProfExt
Professional Exterminating

Richard Cusano • Proprietor
Locally Owned & Operated

**Residential & Commercial
Customized Programs
to Fit Your Needs**

- Termites • Carpenter Ants
- Carpenter Bees • Squirrels
- Rodent Control • Wasps

ALL WORK CONFIDENTIAL - UNMARKED VEHICLES - V.A. & F.H.A. CERTIFICATION FOR TERMITE INSPECTION - PRICES QUOTED OVER PHONE

Lic. #B-0557



860-388-4483
www.profect.com



Cooley Gallery

A Painter's Prose: Recently Acquired Works by William S. Robinson (1861-1945). September 6th - October 4th.

The Cooley Gallery is proud to announce, *A Painter's Prose, Recently Acquired Works by William S. Robinson* an exhibition of over 25 historic paintings by the Old Lyme art colony artist. Paintings and drawings pre-date symbols as a non-verbal forms of communication. Fast forward to today, a time marked of numerous methods of communication, we often go back to the non-verbal forms like music and painting as age-old reliable sources that soothe the soul. This exhibition, *A Painter's Prose*, which opened at The Cooley Gallery on September 6th, is a collection of paintings by Mr. Robinson (1861-1945) of various sizes and subjects that communicate a sense of place with an ease and gentleness in a very clear, poetic and non-verbal way.

Her Way: Paintings by American Women from the 19th, 20th and 21st centuries. October 9th - November 15th. The Cooley Gallery is proud to announce, *Her Way, An Exhibition and Sale of Paintings by American Women* from the 19th century through present day. The Cooley Gallery opens this exhibition as a part of a town-wide celebration of women artists and their place in American art history.

All Paintings Great and Small. November 20th, 2014 - January 10th, 2015. Considered the "kick-off to the holiday season in Old Lyme," The Cooley Gallery's holiday exhibition is in its 28th year and boasts over 250 historic and contemporary little paintings by artists from around New England and the United States.

Visitors are welcome and encouraged Tuesday through Saturday 10 am to 5 pm or online anytime at www.cooleygalleries.com. The Cooley Gallery, 25 Lyme Street. (860)434-8807; cooleygalleries.com.

Lyme Art Association

New England Landscape Invitational: September 26th – November 8th. Opening reception: Friday, October 3, 6-8 pm.

Deck the Walls: November 14th through January 3rd, 2015. Opening reception: Friday, November 21st, 5-7 pm.
Shop Tax Free at the LAA's opening receptions!

The Shoreline Soup Kitchens & Pantries provide food and fellowship to those in need. Serving the towns of Essex, Chester, Clinton, Madison, Old Saybrook, East Lyme, Lyme, Old Lyme, Killingworth, Westbrook and Deep River.

Learn how you can help at:

www.shorelinesoupkitchens.org

Good hearing is
PRICELESS

Is it time to get your hearing checked?

County Hearing and Balance

| | |
|--|--|
| OLD SAYBROOK 900 Boston Post Road 860-388-0022 | WATERFORD Lowe's Plaza 167 Parkway North 860-443-6944 |
|--|--|

Call us for a Free Initial Consultation
All services by Doctors of Audiology
www.countyhearingandbalance.com

9 TOWN TRANSIT

New Service in Haddam!

**Public Transportation for all ages serving
Chester, Clinton, Deep River, Essex,
Haddam, Killingworth, Lyme, Old Lyme,
Old Saybrook & Westbrook**

Connections to Southeast Area Transit buses in New London,
CT Transit New Haven in Madison, Middletown Transit
and CT Transit Hartford in Middletown

Call 860.510.0429
www.9towntransit.com

9 Town Transit is Operated by the
Estuary Transit District



Caliber Computing

Charles E. Delinks, Jr.
www.calibercomputing.com

Since 1993

Computer Systems & Networks

- Virus & Spyware Removal
- DSL & Cable Broadband
 - Network & Email Configuration
- Sales, Installations & Upgrades

**20 Homestead Circle
Old Lyme, CT 06371**

(860) 434-1926 phone/fax
(860) 823-9250 cell
ced@calibercomputing.com



East Lyme Psychological Associates

Psychological & Psychiatric Services

Serving adults, adolescents, children and families • Individual, couple, and family therapy

Psychiatric assessment and medication management

Adoption competent therapists work with adoptees and/or families

Psychological evaluation for adoption related issues, personality functioning, and treatment planning

**29 Chesterfield Road
East Lyme, CT
860-739-6974**

Town Notes

Town Hall will be closed on the following Holidays: 2014: Mon., Oct. 13 – **Columbus Day**, Tues., Nov. 11 – **Veterans' Day**, Thurs., & Fri., Nov. 27 & 28 – **Thanksgiving**, and Thurs., Dec. 25 – **Christmas Day.** **Town Hall Hours** for most departments is Monday through Friday, 9:00 am – 4:00 pm.

Curbside trash removal is performed by Old Lyme Sanitation (860-434-3800). There is **no trash pick-up on the following holidays:** Christmas (Dec. 25), New Year's (Jan. 1), Memorial Day (last Monday in May), July 4th, Labor Day (first Monday in Sept.), and Thanksgiving Day (fourth Thursday in Nov.). Trash normally collected on Thanksgiving is picked up the next day, along with the regular Friday pickup. For other holidays, trash pickup moves to the following day, until Thursday and Friday, which remain on schedule.

Please have trash container out at curbside by 6am on your assigned day. Containers should be three feet away from any other objects, such as mailboxes, cars, other containers, planters, etc. Please be mindful not to block breakdown/emergency lane with receptacle. **Clearly mark your address on recycling and trash receptacles to avoid mix up, removal or displacement of cans.** Phone Michele Hayes (860-434-1605, ext. 212) with any additional trash removal questions that you may have.

Single stream curbside recycling pick-up is provided for clean bottles, cans, #1 - 7 plastics and paper products co-mingled in the green recycling carts every other week. Corrugated cardboard boxes need to be flattened for recycling. A complete list of acceptable single stream recyclables is available on the Town's website (www.oldlyme-ct.gov)-- click the trash and recycling link on the Selectman's or Public Works pages or at www.oldlymesanitation.com. Information is also available in the Selectman's Office at the Memorial Town Hall, 52 Lyme Street, and at the Landfill/Transfer Station on Four Mile River Road. Please phone Michele Hayes (860-434-1605, ext. 212) with any additional questions you may have.

Curbside recycling is performed **every other week** by Old Lyme Sanitation (860-434-3800). There is **no recycling pick-up on the following holidays:** Christmas Day (Dec. 25), New Year's (Jan. 01), Memorial Day (last Monday in May), July 4th, Labor Day (first Monday in Sept.), and Thanksgiving Day (fourth Thursday in Nov.). Recycling normally collected on Thanksgiving is picked up the next day, along with the regular Friday pickup. For other holidays, recycling pickup moves to the following day, until Friday, which remains on schedule. Recycling information is available on the Town's website (www.oldlyme-ct.gov), as well as in the Selectman's Office at the Memorial Town Hall, 52 Lyme Street, or at the Landfill/Transfer Station on Four Mile River Road. **Clearly mark your address on recycling and trash receptacles to avoid mix up, removal or displacement of cans.** Phone Michele Hayes (860-434-1605, ext. 212) with additional questions you may have.

Electronics are now accepted at the Transfer Station. Residents are able to bring the following items to the Transfer Station on Four Mile River Road: computers (personal computers, mainframes, med-range computers, laptops); networking equipment (hubs, switches, control cards, etc.); computer monitors, televisions, printers, keyboards, mice, adaptors, stereos, speakers, VCR's, scanners, fax machines, copiers telephones and telephone systems, computer wire and cable; computer drives and storage devices (floppy drives, CD ROMs, hard drives), power supplies, circuit boards, microwaves, scrap copper (cable, pipe, etc.), scrap aluminum (machine and machine parts, cable extrusions, etc.), fluorescent light bulbs, UPA (uninterrupted power supply) batteries, and related computer and electronic equipment.

Additional automated trash and recycling containers should be ordered through Michele Hayes (860-434-1605, ext. 212) in the Selectman's Office at the Memorial Town Hall, 52 Lyme Street. Containers cost \$80. **Please mark clearly your address**

continued on page 29

• *Town Notes continued from page 28* •

on recycling and trash receptacles to avoid mix up, removal or displacement of cans. Homeowners are responsible to replace lost, stolen or broken cans at their expense.

Transfer Station/Landfill Hours. The Transfer Station is located on Four Mile River Road and is open Tuesday-Friday, 7:30 am-3:45 pm, Saturday, 8:30 am-4:00 pm. Closed Sunday and Monday. Taxpayers' vehicles should have a Transfer Station sticker affixed to the right-hand side of windshield. Vehicles without a sticker, should bring proof of property address (i.e., tax bill, mortgage statement or closing papers), along with a driver's license and registration.

Bulky Waste and Demolition: Vehicles will be charged by weight at \$110/ton. Recyclables should not be mixed in the same load with Bulky Waste or Demolition debris. Loads less than 100 lbs. are charged a minimum fee of \$5.

Brush is charged on a per load basis. No wood or limbs thicker than four inches are accepted.

Grass clippings are not allowed at the Transfer Station because of chemical contamination from pesticides and fertilizers and cannot be deposited in your trash can. Please compost on your property.

Reporting Streetlight Problems: Please phone Michele Hayes in the Selectman's Office at the Town Hall (860-434-1605, ext. 212) to report a streetlight outage and/or trash or recycling problem. When reporting a **streetlight, please make note of the pole location and pole number.** Thank you!

CT License
E1-123441

SICURANZA ELECTRIC, LLC



John Sicuranza
Owner / Electrician

www.SicuranzaElectric.com
email: seco4343@aol.com

860-434-4343

Specializing in all Residential
& Commercial work

- | | |
|--|--|
| <input checked="" type="checkbox"/> Service Upgrades | <input checked="" type="checkbox"/> Troubleshooting |
| <input checked="" type="checkbox"/> Generators | <input checked="" type="checkbox"/> Network Cabling |
| <input checked="" type="checkbox"/> Surge Suppressors | <input checked="" type="checkbox"/> Landscape Lighting |
| <input checked="" type="checkbox"/> Smoke / CO Detectors | <input checked="" type="checkbox"/> Marine Wiring |

Did you Know?

Now available at
Essex Printing

18 Industrial Park Road
Centerbrook, CT 06409
860-767-9087
www.essexprinting.com

8 out of 10 customers will
remember your name
after you give them a
promotional
product.



WPCA Update

The WPCA continues to administer its policy of sewer avoidance for the majority of the Town of Old Lyme. While we have to address certain areas along the shoreline requiring connection to a centralized system, both the WPCA and the State Department of Energy and Environmental Protection (DEEP) recognize that our sewer avoidance policies are effective for the vast majority of the town.

Residents will receive notifications from the Town signed by the officials of the WPCA in regard to their need to pump their septic systems. Per our local ordinance, property owners are required to pump their systems every 7 years with few exceptions. Any questions regarding the proper pumping or maintenance of your system should be directed to the Town's Health Department.

The results of the Clean Water Funds Study undertaken last year by the Town of Old Lyme in concert with the (DEEP) indicated that areas along our shoreline south of 156 are collectively contributing to pollution and must connect to a centralized wastewater management system. Their current systems are inadequate to address the pollution. These areas include all residences within Sound View, Hawks Nest, White Sand, Miami Beach, Old Colony Beach and Old Lyme Shores. The town explored a local alternative but determined that the costs would far exceed a regional option.

Two of the private beach associations, Old Lyme Shores and Old Colony, have already started the process to connect

to the regional system in New London and the DEEP will be issuing an order to the Town to connect the remaining four areas identified above. The WPCA intends to comply with the state order and, in cooperation with the DEEP, will develop a centralized system, arranging for reimbursements through the state to significantly reduce costs to individual property owners in the affected areas. Under the plan, a Town managed pumping station and centralized system will connect the affected areas and direct the wastewater to New London through East Lyme. This project will give flexibility to the owners of property along the shoreline to improve their homes, it will clean up our beaches, and it will result in a very clean and usable Long Island Sound.

While the WPCA and the Town will have to undertake steps to fund the project initially, the overall project costs will be ultimately paid only by the property owners affected. There will be no cost to the Town. This project will have a "net zero" impact on taxes for Old Lyme property owners not residing in the affected areas.

I would like to thank the members of the WPCA and the Board of Selectmen for their tireless efforts over the past two years to address these issues.

Kurt J. Zemba, Chairman, Old Lyme Water Pollution Control Authority

Old Lyme Town Hall • 860-434-1605 www.oldlyme-ct.gov

Old Lyme Municipal Departments

| Department | Contact | Phone |
|------------------------|------------------------------|---------------|
| Animal Control | Lynn Philomen | 434-3047 |
| Assessor | Walter Kent | 434-1605 x218 |
| Board of Selectmen | Bonnie A. Reemsnyder | 434-1605 x211 |
| Board of Selectmen | Mary Jo Nosal | 434-1605 x212 |
| Board of Selectmen | Skip Sibley | 434-1605 x212 |
| First Selectwoman | Bonnie A. Reemsnyder | 434-1605 x211 |
| Building | John Flower | 434-1605 x230 |
| Emergency Management | David Roberge | 434-1605 x231 |
| Finance | Doris Johnson | 434-1605 x215 |
| Finance Director | Nicole Stajduhar | 434-1605 x232 |
| Fire Marshal | David Roberge | 434-1605 x231 |
| Harbormaster | | 434-1605 x212 |
| Health Director | Vijay Sikand, M.D. | 434-1605 x214 |
| Information Technology | Ruth Roach | 434-1605 x237 |
| Town Historian | John Pfeiffer | 434-8829 |
| Land Use | Kim Groves, Kim Barrows | 434-1605 x236 |
| Parks and Recreation | Don Bugbee | 434-1605 x235 |
| Police | TFC Gary Inglis | 434-7080 |
| Probate Court | Hon. Jeffrey McNamara | 739-6052 |
| Public Works | Ed Adanti | 434-2461 |
| Registrar of Voters | Sylvia Peterson & Don Tapper | 434-1605 x226 |
| School District #18 | Superintendent of Schools | 434-7238 |
| Senior Center | Stephanie Lyon | 434-4127 |
| Social Services | Ruth Roach | 434-1605 |
| Tax Collection | Judith Tooker | 434-1605 x216 |
| Town Clerk | Eileen Coffee | 434-1605 x221 |
| Treasurer | John Bysko | 434-3632 |
| Zoning Enforcement | Keith Rosenfeld | 434-1605 x225 |
| Other Agencies | | |
| Library/Passports | Mary Fiorelli, Director | 434-1684 |
| Youth Services Bureau | Mary Seidner, Director | 434-7208 |

Old Lyme - Community Listings

USEFUL NUMBERS

| | |
|---|----------------|
| CAMP CLAIRE | (860) 434-0368 |
| CONSUMER PROTECTION | (860) 566-2294 |
| LYMES' YOUTH SERVICE BUREAU | (860) 434-7208 |
| SENIOR CENTER. | (860) 434-4127 |
| OLD LYME VISITING NURSE. | (860) 434-7808 |
| OLD LYME HISTORICAL SOCIETY | (860) 434-0684 |
| 9 TOWN TRANSIT | (860) 510-0429 |
| LYME/OLD LYME JR WOMEN'S CLUB | (860) 501-9773 |
| DEMOCRATIC TOWN COMMITTEE | (860) 434-2271 |
| REPUBLICAN TOWN COMMITTEE | (860) 434-0740 |
| LYME ART ASSOCIATION | (860) 434-7802 |
| VETERANS OF FOREIGN WARS - | |
| LYMES' POST 1467. | (860) 434-4207 |
| AMERICAN LEGION - POST 41 | (860) 664-0047 |

SCHOOLS

| | |
|---|----------------|
| SUPERINTENDENT'S OFFICE DISTRICT 18 | (860) 434-7238 |
| MILE CREEK SCHOOL | (860) 434-2209 |
| CENTER SCHOOL | (860) 434-7838 |
| MIDDLE SCHOOL | (860) 434-2568 |
| LYME/OLD LYME HIGH SCHOOL | (860) 434-1651 |
| MULTICULTURAL MAGNET | |
| (NEW LONDON) | (860) 437-7775 |

COLLEGES

| | |
|---|----------------|
| LYME ACADEMY COLLEGE OF FINE ARTS | (860) 434-5232 |
|---|----------------|

We Need Your Help

This is a survey question being posted by the Town's Recycling Incentive Committee. This committee, is meeting regularly to evaluate ways to manage our solid waste, with the primary goal of increasing our community's recycling habits. To date, we have over 250 responses and the committee would like to hear from you. Please look for the survey on line through mid-August at <http://bit.ly/1m8KeiH> and let us know what you think.

Frequently Asked Questions

1. Am I required to recycle? Everyone in Connecticut is required to recycle. The Mandatory Recycling Act went into effect in 1991 and includes all Old Lyme residents, whether in a single or multi-family house or building; whether they own or rent.

2. What items can be recycled? Single-Stream recycling accepts: Newspapers & inserts; magazines & brochures; flattened cardboard; paper bags; paperboard boxes; junk mail; phone books; catalogs; hard- & soft-covered books; paper envelopes; file folders; white & colored papers; white, green, & brown glass; aluminum cans & foil; pots & pans; juice & milk cartons; plastic juice & milk cartons; plastic soda bottles; detergent bottles; all plastic #1 to #7; empty aerosol cans; plastic buckets & crates; plastic flower pots & racks. See the contact information below for more information.

3. Can grass clippings or yard waste go in my blue trash or green recycling cart? Never throw grass clippings or yard waste in the carts. The best thing to do with grass clippings is to leave them on the lawn.

4. What do I do with plastic super market bags? – Just say "paper"? Plastic bags should never be put in your green recycling cart because they can jam equipment at the processing centers. However, most Connecticut supermarkets have collection receptacles for plastic bags at the store and they will then be recycled. You can reuse your plastic bags the next time you go shopping or around the home, e.g., as trash bags. The simplest solution is to just bring reusable bags with you when you go shopping.

5. Where can I get additional information about Old Lyme's recycling program? Old Lyme Town Hall: (860) 434-1605 ext. 212 or <http://www.oldlyme-ct.gov>. Old Lyme Sanitation: (860) 434-3800 or <http://www.oldlyme-sanitation.com>.

For town updates & information:
www.oldlyme-ct.gov

Refreshing Cocktails

Nothing is more refreshing than a well crafted cocktail. With all of the quality spirits and liqueurs available it is now easier than ever to create fantastic drinks at home. This is also a good time to mention that when it comes to cocktails it is a great practice to get out of the mind set that because you are mixing your spirit, something cheap is the best way to go. Now with this being said, you do not have to purchase the most expensive, but a nice middle of the road, great tasting liquor or mixer. This will really bring your drink to life.

First lets start simple, some of the easiest cocktails to make at home are liquor mixed with "something else," whether that be a soda, tonic, or a bar juice. Some of our favorites come from Fever Tree, who make fantastic tonic and soda waters, some of which are infused with botanicals, which really add a little something extra to your drink. The Mediterranean Tonic Water has a unique – flavor that mixes well with gin or vodka. Also the RIPE line of bar juices, made here in Connecticut, are some of the best. These fresh made juices are never frozen, heated or have had any preservatives added to them. All of them are delicious, but the Agave Margarita and San Marzano Bloody Mary Mix are my favorites.

Now lets not forget about liqueurs. These slightly less alcoholic, but highly -flavored spirits can really add that extra punch to your cocktail. One such liqueur I have been playing with quite a bit lately is Ancho Reyes Chili Liqueur. This smoky, slightly spicy spirit really adds a bit of depth and an unexpected little kick to any drink you add it to.

So the next time you feel like having a cocktail, do not be afraid to experiment, or just try something new. You never know, a new favorite drink could be on the horizon!

*Anthony Dichiara, Cocktail Coordinator
SeaSide Wine & Spirits and Spirits of Madison*

**INHERITING?
RETIRING?
MOVING?**

call 

**MILLER'S
ANTIQUES**

Since 1939
Stone Age to Moderne

860-873-8286

**Let us Handle Your
Estate Sale**

Estuary Council

ESTUARY COUNCIL OF SENIORS, INC. has been serving seniors in the nine-town Estuary region for 38 years. Call us to receive our Gazette Newsletter or go to www.ecsenior.org for our online newsletter, events calendar, menu, and more.

MEALS ON WHEELS: hot meals for homebound seniors, delivered to your home. A donation of \$3 is requested for those aged 60+. Meals are supported by Senior Resources Agency on Aging with Title III funds available under the Older Americans Act. Call Carol at 860-388-1611.

CAFÉ MEAL SITES: Clinton, Old Lyme, Old Saybrook. Reservations required by calling 860-388-1611 by 11 am, 24 hours in advance. Lunch is served at noon. Meals are served to those with reservations first; if meals remain those without a reservation are then served.

STAN GREIMANN ESTUARY MEDICAL OUTPATIENT TRANSPORTATION: For medical appointments to any medical location beyond the nine-town estuary region. Call Judy at 860-388-1611. Suggested donation of \$35 for a roundtrip Doctor appointment up to 5 hours. Suggested donation of \$70 for appointments over 5 hours.

CLASSES AND ACTIVITIES: Zumba Gold, Tai Chi, Board Games, Billiards, Ping Pong, Yoga, Stretch and Strength Exercise Classes, Mah Jongg, Wii, Cribbage, Writer's Group, Book Club, Quilter's Group, Needlecrafters, Hand and Foot. Instructional classes for Mah Jongg and Bridge. Check monthly Gazette for all of our programs. The Estuary Gazette is available online by following the link at www.ecsenior.org/news_gazette.php.

ESTUARY THRIFT SHOP: Open 10 am - 3:45 pm, Monday - Friday; and from 9 am - 12:45 pm on Saturdays. Clothes (men, women, and children), kitchen items, crafts, etc. Donations accepted and volunteers always needed.

THE GYM AT THE ESTUARY: Expanded hours-stop in for more information. There are seven different pieces of weight equipment and four cardio machines, including a NuStep. Member packages include a fitness assessment and three (3) training sessions on all machines (required). Gym Membership Options: Three months - \$50, Six months - \$90, Full year - \$150. To schedule an appointment with our Fitness Trainer, Skylar Miers, ATC, call 860-388-1611. Call for more information.

THE MARSHVIEW GALLERY AT THE ESTUARY: Open daily 8 am - 4 pm, and Saturdays from 9 am - 1 pm. The art on exhibit changes monthly and highlights the talents of local artists from along the shoreline. Join us on the second Thursday of each month for the Artist Reception from 5 - 7 pm. Refreshments are served, and a door prize is drawn. All ages are welcome. Call 860-388-1611 for information.

DONATE YOUR CAR OR BOAT TO THE ESTUARY COUNCIL: Turn your car or boat into a tax deduction by calling: 1-800-716-5868. Proceeds benefit the vital services we provide for seniors in the nine-town Estuary Region.

VOLUNTEER OPPORTUNITIES: Call Judy at (860) 388-1611.

ANNIVERSARY CELEBRATION: The M. Monica Eggert Senior Center turns 40 this year. Please join us for this Gala event at The Kate on September 20. Tickets \$50.

Feeling Stressed?

Stress is a part of everyone's life. We all feel stressed when deadlines loom, when conflicts arise, or when people's demands on us seem more than we can handle. But there is good stress too. We know now that even those happy events – the wedding, the reunion of family or friends, the long-anticipated vacation – create stress in our bodies as well. Stress becomes a problem for us when it is prolonged or when we turn to negative methods of coping. Turning to alcohol or drugs to numb our feelings, using food for comfort, or isolating to avoid difficult interactions all lead to increased stress. Healthier options include engaging in cooperative relationships, exercise, yoga, and relaxation strategies. Learning to relax has an immediate effect on our bodies,

but also has a hold-over effect to reduce the negative impact of ongoing stressors. Learning relaxation skills is easy, but they only work if they are practiced with some regularity. Therapy can also help, allowing us to talk through our inner struggles in a supportive, nonjudgmental environment. When positive coping strategies become habits, the results can be dramatic. Our outlook improves, relationships feel more supportive and intimate, and demands begin to feel more manageable. If you want help finding the strategies that will work for you, a therapist can assist you in discovering the right path. Choose the positive approach and see the changes that will come your way.

*Nancy Randall, Psy.D.
East Lyme Psychological Associates*

Help Wanted: If you have extra time, you can earn extra money! Part-time Sales Representatives needed due to our recent growth. Set your own work schedule. Sales experience helpful but not necessary. Ideal for persons interested in supplementing their current income. Grow with us! Send resume and cover letter to print@essexprinting.com. No phone calls please.

Gov. Malloy: Atlantic Hurricane Season Begins

With the 2014 Atlantic Hurricane Season beginning June 1, Governor Dannel P. Malloy today is reminding Connecticut residents to be prepared. The Atlantic hurricane season runs from June 1 to November 30, with the principal threat period for Connecticut occurring between mid-August and mid-October.

“Every home should have a basic emergency plan that can be used for any emergency,” said Governor Malloy. “I urge residents to know what potential risks your community and neighborhood may face, such as storm surge, flooding, road or bridge closures.”

Department of Emergency Services and Public Protection Commissioner Dora B. Schriro said, “I recommend that all Connecticut residents take three simple preparedness steps now: Get a kit, make a plan, and stay informed. Carefully monitor weather reports and promptly follow instructions from public safety officials if a storm approaches.”

Governor Malloy offers the following preparedness tips:

Recommended Items to Include in a Basic Emergency Supply Kit

- One gallon of water per person per day for at least three days, for drinking and sanitation
- At least a three-day supply of non-perishable food
- Battery-powered or hand crank radio and a NOAA Weather Radio with tone alert and extra batteries for both
- Flashlight and extra batteries
- First aid kit
- A whistle to signal for help
- Moist towelettes, garbage bags and plastic ties for personal sanitation
- Wrench or pliers to turn off utilities

Epilepsy Foundation of CT

The Epilepsy Foundation of Connecticut is Connecticut’s leading source of information for the thousands of people who have epilepsy. Founded in 1982, the Foundation works to ensure that people with epilepsy are able to participate in all life experiences through information, education, recreation, advocacy and support.

A seizure is an abnormal electrical discharge in the brain. Seizures can be caused by head injuries, lack of oxygen at birth, brain tumors and other health condition. People often think of seizures only as jerking and shaking uncontrollably; however, not all seizures are convulsions. There are many different symptoms of seizures, which can include eye fluttering, staring and laughing. Recurring seizures can be a sign of epilepsy.

The Epilepsy Foundation of Connecticut has many programs to offer those living with epilepsy. In particular, we offer 7 support groups throughout the state. Those interested in attending meetings are asked to please RSVP, to the Epilepsy Foundation of Connecticut by calling 800-899-3745 or emailing Allison at Allison@epilepsyct.com. For more information visit <http://www.epilepsyct.com> or call 800-899-3745. Offices are located at 386 Main Street, Middletown, CT.

- A manual can opener for food (if kit contains canned food)
- Local maps
- Cell phone with chargers, inverter or solar charger


Family Emergency Plan

- Identify an out-of town contact. It may be easier to make a long-distance phone call than to call across town, so an out-of-town contact may be in a better position to communicate among separated family members
- Be sure every member of your family knows the phone number and has a cell phone, coins, or a prepaid phone card to call the emergency contact. If you have a cell phone, program that person(s) as “ICE” (In Case of Emergency) in your phone. If you are in an accident, emergency personnel will often check your ICE listings in order to get a hold of someone you know. Make sure to tell your family and friends that you’ve listed them as emergency contacts
- Teach family members how to use text messaging. Text messages can often get around network disruptions when a phone call might not be able to get through
- Subscribe to alert services. Go to www.ct.gov/ctalert to register for emergency alerts.


For more information on hurricane preparedness, visit www.ct.gov/hurricane or www.ready.gov.

**DO YOU HAVE
“Ugly Toenail Syndrome”?**
Unattractive, thick, yellow,
discolored, brittle toenails

Before...



...After



We Can Help!!!

Introducing a new innovative “laser” treatment for toenail fungus. The “Q-clear laser” is FDA approved. Safe and painless. No longer a need for oral medications or topical creams and solutions!! No longer a need to hide your embarrassing toenails!! Free consultation available.

Call today for an appointment at one of our two office locations.

HADDAM FOOT CARE SPECIALIST
Dr. Stuart L. Jablon
1606 Saybrook Road (Tylerville), Haddam, CT 06438

Marlborough: 860-295-8791
Haddam: 860-345-3674

Dr. Stuart L. Jablon offers a full array of podiatric services to help you maintain healthy feet.

C17-18-13



Did you know
on any given day **160,000** students
in the U.S. stay home for fear of
being bullied?

No Bully Zone program, an initiative of CFMC's Council of Business Partners, can make a significant difference in our schools and communities by

- ✦ Empowering students
- ✦ Reducing incidents of bullying
- ✦ Improving school climate
- ✦ Increasing school staff awareness
- ✦ Increasing communication between students, teachers and parents



**COMMUNITY
FOUNDATION**
of Middlesex County

Philanthropy • Leadership • Legacy

We Can ALL Take a Stand!

Join **CFMC's Council of Business Partners** and stand up to bullying.

CFMC's Council of Business Partners include: **John J. Sullivan:** *A&A Office Systems*, **Arlene Mazzotta and Laura Pedersen:** *A.R. Mazzotta Employment Specialists*, **Bill, Susan and Shawn McCann:** *Best Cleaners*, **Colin Burr:** *Brown & Brown Insurance*, **David Director:** *Connecticut Lighting Centers, Inc.*, **David Gilbert:** *Direct Energy*, **Bill McMinn:** *Essex Printing and Events Magazines*, **Mauricio C. Salgar:** *Gabrielle's*, **Dan Zimmerman:** *LiveKind, Inc.*, **James Mahoney,** *Mahoney Sabol & Co.*, **Marc Levin:** *Malloves Jewelers, Middletown*, **Nancy Raczka:** *Attorney*, **Theodore Rossi:** *The Rossi Companies*, **David Shulman:** *Suburban Stationers, Inc.*, **St. Mary's Church, Portland and Congregation Adath Israel, Middletown, Interfaith Golf Open Tournament.**

For more information about the "No Bully Zone" program and how to bring it to your community, contact Cynthia Clegg at the Community Foundation of Middlesex County, 860.347.0025 or Cynthia@MiddlesexCountyCF.org.

*The Community Foundation of Middlesex County Council of Business Partners
"No Bully Zone" program is implemented in partnership with*



“Bound for the Sound!”



Annual LOLEF Road Race – Saturday, September 27th

The Lyme–Old Lyme Education Foundation will host its annual 10K & 5K Road Races and 1 Mile Fun Run on Saturday, September 27 at 9:00 am. Afterwards, there will be a beach party and live music. Bound for the Sound will start at Sound View Beach in Old Lyme, taking runners through some of the most picturesque natural vistas in Old Lyme. The 10K is mostly flat with some gently rolling hills along country roads. The 5K is very flat and fast. Both races end with a finish down historic Hartford Avenue to the beach. The Foundation encourages runners of all ages to participate, and strollers are welcome. Prizes will be awarded to the top male and female finishers in each category. Race T-Shirts are available for the first 500 to register. Go to www.LOLEF.org for more information and to register.

The Lyme–Old Lyme Education Foundation is an independent, 501(C)(3) non-profit charitable organization, established in 2006. The Foundation raises and distributes funds to create or enhance valuable educational programs beyond those traditionally provided by the Region 18 school district, seeking to build educational partnerships between students and community members. Annual fundraising events include the Trivia Bee in Winter, the Bound for the Sound 5/10K Road Race in September, and our annual appeal in December.



LYME–OLD LYME EDUCATION FOUNDATION
 “Supporting Excellence in our Schools and Community”
 PO Box 895, Old Lyme, CT 06371
www.LOLEF.org

William Pitt | Sotheby's
INTERNATIONAL REALTY

OPEN HOUSE SUNDAY 9/14 FROM 1-3

244 JOSHUATOWN ROAD, LYME \$2,386,000
This majestic property commands unparalleled views of the Connecticut River and beyond. An elegant remodeling and unique expansion have created grand open indoors and out.

SIMPLY THE BEST NEWS!

Jennifer Caulfield
860.388.7710
Jane Pfeffer
860.227.6634
jenniferandjane@wpsir.com

JENNIFER & JANE ASSOCIATES
#1 Essex Brokerage
2013 Total Sales \$47,436,500
#1 Listed Volume Sold in Lower CT Valley 2013
Connecticut Magazine 5 Star Realtor 2010-13
Licensed in Connecticut and Rhode Island

Experience The Value Of Partnership

NEWLY PRICED!

HAMBURG COVE REDUCED TO \$2,395,000
Imagine setting sail from the deep water dock on sheltered Hamburg Cove for a twilight cruise and returning to your storybook home with water views from every room.

NEWLY PRICED!

LYME: HOUSE OF THE DAY NOW \$1,750,000
Featured as the WSJ House Of The Day, this American pastoral beauty merits its recognition. Vision and well honed skills of extraordinary craftsmen have taken this c1750 New Hampshire blacksmith shop and given it new life.

SOLD!

27 JOSHUA LANE, LYME \$1,750,000
With sweeping vistas over Ram's Horn Creek out to the Connecticut River, this magnificent architecturally designed custom built shingle style residence is remarkable.

ESSEX BROKERAGE | 13 Main Street | 860.767.7488 | OLD LYME BROKERAGE | 103 Halls Road | 860.434.2400 Each Office is Independently Owned and Operated. Equal Housing Opportunity.

Christy Laurence Realty LLC

Since 1985

P.O. Box 4022 ~ Old Lyme, CT 06371



Christy Laurence
Real Estate Broker

GRI, ABR, CIPS, AHWD, EPRO

mobile 860.235.0401

fax 860.434.1371

email Christy@christylaurence.com

web ChristyLaurence.com

Your Personal
and Family Realtor
for Life



Vaccine Information for Parents

How vaccines work. Vaccines are an important and safe way to keep you healthy. Most vaccine-preventable diseases are caused by germs that are called viruses or bacteria. Vaccines to help prevent these diseases generally contain weakened or killed viruses or bacteria specific to the disease. Vaccines help your body recognize and fight these germs and protect you each time you come in contact with someone who is sick with any of these diseases. There are a series of steps that your body goes through to develop immunity through vaccination:

First a vaccine with weakened or killed viruses or bacteria is given by a shot (influenza vaccine may be given by a nasal spray and rotavirus vaccine is given by mouth). **Next** over the next few weeks your body makes antibodies and memory cells against the weakened or dead germs in the vaccine. **Then** the antibodies can fight the real disease if you are exposed to the disease germs and they invade your body. The antibodies will help destroy the germs so you won't get sick. **Finally** antibodies and memory cells stay on guard in your body for years after you're vaccinated to protect you from the disease. This protection is called immunity.

Where to go to get your child vaccinated. There are hundreds of doctors and health care providers in Connecticut that participate in the Connecticut Vaccine Program (CVP) and can give your child the vaccines he or she needs. If your regular health care provider does not participate in the CVP or your child does not have a regular health care provider, call (860) 509-7929 to find a CVP provider near you. Remember, while the vaccine is available at no cost, your health care provider may charge a fee for giving your child the vaccine.

When to get your child vaccinated. Making sure your child gets vaccinated at the right age is very important for their health. It's even more important that your child gets the immunizations he or she needs by the age of 2 years old. This is because serious illness is most likely to happen in the first two years of a child's life.

www.ct.gov

SmartStrand[®] Silk
with DuPont[™] Sorona[®]

SmartStrand[®] Silk with DuPont[™] Sorona[®] is the **ONLY** luxuriously soft carpet with lifetime built-in stain and soil protection that never washes or wears off. Special Financing Available.

WORLD'S
MOST
LUXURIOUS
SOFT CARPET

MOHAWK
COLORCENTER

860.399.6161
www.westbrookfloor.com
1275 Boston Post Road
Westbrook, CT 06498

Tuesday - Friday: 9 a.m. - 5 p.m.
Saturday: 10 a.m. - 4 p.m.
Closed Sunday & Monday
Evening Appointments Available

WESTBROOK
FLOOR COVERING

Harvest Fun Day September 27



Games of skill and chance await at Harvest Fun Day!



Get creative at the kids' crafts at Harvest Fun Day.

The kids have gone back to school, the days and nights are cooler, and the leaves have begun to turn. Autumn has arrived and it's time to celebrate with the annual Harvest Fun Day at Christ the King Church. With so much to do at Harvest Fun Day, it's a great way to spend the day:

Browse the **King's Rummage Sale** for some extra-special bargains and one-of-a-kind finds. From bikes to books, toys to teacups, Easter baskets to Christmas ornaments, you'll find it here! The Rummage Sale continues Sunday morning from 9am to 12 noon. New this year, the **Basket Raffle** offers an array of interesting and fun items collected into themed baskets like Kids Sports Fun, Parents' Night Out, Family Movie Night, Holiday Baking, and more. There's sure to be something for everyone! While you're shopping or browsing the raffle, let the kids entertain themselves at the **Games and Crafts**; then satisfy your sweet cravings at the **Bake Sale**, where delectable home-baked goodies await! Need an autumn spruce-up? Choose from premium mums, flowering cabbage and kale, and newly divided perennials from local gardens at our **Plant & Produce** sale. Pick a pumpkin and a couple of gourds, add a hay bale, and you've got "instant autumn" for your front porch. New this year: gently used gardening tools. And when you get hungry from all this harvest fun, the Men's Club offers its tasty fare all day long.

Harvest Fun Day takes place at Christ the King Church, 1 McCurdy Road, Old Lyme, on Saturday September 27 from 9 am to 3 pm. The Rummage Sale and Plant Sale will continue Sunday morning (September 28) from 9 am to 12noon. Visit www.christthekingchurch.net for directions. For more information, call 860-434-1669.

Order Your Gift Today!

VERY LOVELY PARTY

\$5 OFF
ANY ARRANGEMENT
OR DIPPED FRUIT BOX
CODE: OLSQ

Celebrate Your Occasion with
Edible Arrangements®. Order Now and Save!

1347 Boston Post Road Madison, CT 203-245-3535
316 Boston Post Road Waterford, CT 860-447-8401
240 Post Road Westerly, RI 401-322-8800

EdibleArrangements.com

Offer valid at participating locations shown below. Valid on arrangements and dipped fruit boxes only. Offer expires 12/31/14. Offer code must be used when placing order. Arrangements available in a variety of sizes. Containers may vary. Delivery not available in all areas. Cannot be combined with any other offer, promotion, coupon or coupon code. Excludes tax and delivery. Not valid on previously purchased items. Acceptance and use of coupon is subject to all applicable laws. Void where prohibited. See store for details. EDIBLE ARRANGEMENTS® & Design and all other marks herein are trademarks of Edible Arrangements, LLC. ©2013 Edible Arrangements, LLC. All rights reserved.

RESIDENTIAL BROKERAGE

Joel Lucas, Realtor®
Shore & Country Specialist

**#1 CBRB Agent in
Middlesex/New London
Counties Sales 2011/12/13**

860.304.9150

Lyme Academy College of Fine Arts

We welcomed our largest freshman class ever in late August. The Class of 2018 comprises 37 students from 11 states and even one student from China! The majority has registered to study for a BFA degree, while several are also transferring into our program at more advanced levels. Two are planning to pursue Post-Baccalaureate Certificates.

If you are interested in joining the College, save the date for our Admissions Open House on Saturday, October 25, from 10 am to 2 pm. It would be helpful for planning purposes if you could register in advance by contacting admissions@lymeacademy.edu or (860) 434-5232.

Please join us on Friday, September 12, between 6 and 8 pm at the Opening Reception for the Studio Faculty Exhibition 2014. All are welcome and admission is free. Come and see this exceptional exhibition of work by our faculty, who are all working artists as well as teachers.

The College is offering a full program of Continuing Education and Pre-College classes this fall. Registration is still open and prices are extremely competitive. Classes


continued on page 39

"At the Beach" by Nancy Gladwell is one of the paintings which will be on display in the College's Studio Faculty Exhibition 2014 opening Friday, Sept. 12.



Our new partner: the University of New Haven. A new session of Continuing Education and Pre-College Classes starts in the fall.





**Children's
Dental
Associates**
OF NEW LONDON COUNTY

The American Academy of Pediatric Dentistry recommends children be seen by a **Pediatric Dentist** by the **First Tooth** or **First Birthday!**

Establish your child's dental home now and call us for an appointment!

131 Boston Post Road • East Lyme
860.691.5014

"Creating happy healthy smiles one child at a time."

www.ChildrensDentalNLC.com

BEAUTIFUL TREES MAKE A HOUSE A HOME.

We're Bartlett Tree Experts, a 100+ year old tree and shrub company with global reach and local roots. Our services include:

- Tree & Shrub Pruning
- Cabling & Bracing
- Fertilization & Soil Care
- Insect & Disease Management



BARTLETT TREE EXPERTS
FOR THE LIFE OF YOUR TREES.

Call 860-767-1752 or visit BARTLETT.COM

• *Lyme Academy College continued from page 38* •

being offered for a five week session (three hours per day/ one day per week) include **Twilight Landscape**, **Digital Painting**, **Naturalistic Figure Painting** and **Figure Sculpture: An Anatomical Intensive**.

Two weekend programs are being offered, which are being taught for six hours per day by College Painting Instructor Nancy Gladwell of Old Lyme. The first is **Still Life: Composition and Content** (September 20-21) and the second is **Figure Painting** (October 11-12). Sign up for both classes and receive a \$50 discount.

One of our most popular fall classes is **Portfolio Preparation**, which is free to all New London, Middlesex and New Haven high school seniors and juniors. This class is designed to help young artists prepare an application to art college.

As a result of the recently announced affiliation with the University of New Haven (UNH), the College is now in the process of working out the logistics of its new role as the sixth college of UNH. After 20 years as an academy and almost another 20 as a fully accredited, independent college, this affiliation represents the next step in the College's evolution as it becomes part of a much larger university, while retaining all the attributes of a small institution.

For further information about the College, please contact our Director of Marketing and Public Relations, Olwen Logan, at (860) 434-3571 ext. 135.



COLDWELL BANKER

RESIDENTIAL BROKERAGE

SINCE 1906



Nancy Mesham
860-227-9071

Previews Specialist



12 Riverbend
Entertainer's Dream
\$1,549,000



16 Sandpiper Point
Lieutenant River
\$1,675,000



100-2 Joshuatown
Hamburg Cove Dock
\$1,950,000



2 Smilax
Neighborhood Perfection
\$459,000



15 Beaver Brook
Pastoral Retreat
\$699,000



3-1 Tisbury
First Floor Master
\$339,000



3 Hawthorne
Stunning One Floor Living
\$419,900



183-5 Joshuatown
Upper Pond Tranquility
\$1,150,000

Proven Results in Every Market.

Call me today! 860-227-9071 nancymesham.com





Is it Time to Change Your View?

Let me help you navigate through the home selling and home buying process.

ROSE MCWAID

HELPING YOU GET FROM POINT A TO POINT B

860.573.0667
 rose.mcwaid@raveis.com

Florence Griswold Museum



Upper left: Mary Rogers Williams (1857–1907), *A Profile*, Oil on canvas. Private Collection. Upper right: Kari Russell-Pool, *Banded Vessel (Chromatic Series)–Steel Blue with Yellow and White* (2010). Blown and flame-worked glass, hextol. H: 17 ¼ in. Diam: 10 in. Courtesy of the Artist. Lower left: Mary Knollenberg, *Woman on Her Back*, 1975. Vermont Marble. Private Collection. Lower right: *Wee Faerie Village in a Steampunk'd Wonderland, The White Rabbit*, illustration by Aaron Miller.

Smith's Acres LLC



Open
9 am to 6 pm
7 days a week



25% OFF
 any one regular priced item
 Cannot be combined with any other offer. Not to be used on consignment items
 EXPIRES OCTOBER 6, 2014 OL

Check out our Workshops and Classes
<http://www.smithsacres.com/Events.php>
 Find us on Facebook!

From October 3 through January 25, the Florence Griswold Museum is proud to present “Life Stories in Art,” a series of concurrent exhibitions highlighting the contributions of three important women artists in Connecticut in three different media over the course of three centuries.

The Museum’s Kriebler Gallery will feature more than 70 works by 19th century painter Mary Rogers Williams; 20th century sculptor Mary Knollenberg; and contemporary glass artist Kari Russell-Pool. Although separate exhibitions, they each carry the theme “Life Stories in Art” and serve as an exploration of these women’s individual journeys of sacrifice, self-discovery, and balancing multiple roles in the pursuit of their art.

For a month, October 3 through November 2, visitors will get the extra bonus of Wee Faerie Village in a Steampunk'd Wonderland. Imagine a miniature Victorian world viewed through a steam-powered futuristic lens. With guide in hand visitors travel the Museum’s 11 acres to discover a faerie version of Carroll’s topsy-turvy dreamlike world. Artists create over two-dozen faerie-scaled installations recounting Lewis Carroll’s classic tale, *Alice’s Adventures in Wonderland* in a steampunk setting. Please note there are special hours and pricing October 3 through November 2, which includes access to Wee Faerie Village, special exhibitions, historic house, and grounds. Tues. – Sat. 10am – 5pm & Sun. 11am – 5pm Open Mad Hatter Monday (October 13) 10am – 5pm. \$15 Adults, \$14 Seniors (62+), \$13 Students, \$5 Members, Children 12 and under are free.

After your Wee Faerie Village adventure, wander *Beyond Wonderland* to dozens of shops & restaurants to look for Alice, the Mad Hatter, Queen of Hearts, & other characters from Alice’s adventures. VisitOldLyme.com for a list of participating businesses and special offers.

Musical Masterworks Presents 24th Season of Chamber Music

Musical Masterworks will open its 24th season of chamber music at the First Congregational Church of Old Lyme (2 Ferry Road) with concerts on Saturday, October 25 at 5 pm and Sunday, October 26 at 3 pm. Featured artists will include pianist Jeewon Park and violinist Tessa Lark. Musical Masterworks Artistic Director Edward Arron will perform on cello and serve as host for the concerts. The program will include works by Mozart, Schumann, and Hungarian composer Zoltan Kodaly.

The series will continue with concerts on Saturday, December 6 at 5 pm and Sunday, December 7 at 3 pm. Violinist Colin Jacobsen and violist Nicholas Cords will join cellist Edward Arron for this program, which will feature an arrangement of Bach's *Goldberg Variations* and other works.

The season will continue with concerts on February 14 and 15; March 14 and 15; and May 2 and 3. A special Young People's Concert will be held on Saturday, March 14.

Series subscriptions are available at \$150 for the five concert series. Tickets to the individual concerts are \$35. For more information, please visit www.musicalmasterworks.org or call 860-434-2252.



Pianist Jeewon Park and violinist Tessa Lark will perform in the opening concerts of Musical Masterworks' 2014-2015 season at the First Congregational Church of Old Lyme.

WHEN IT COMES TO SENIOR LIVING,



this is the life

The dining, the service, the care – ask our residents what they love about Crescent Point at Niantic and you'll get many answers.

With the help of our **Harbor Program for the Memory Impaired**, our residents are staying connected to family, and leading happier, more fulfilling lives.

Call 860-739-9479 today to reserve a complimentary luncheon & tour.



A Benchmark Senior Living Community

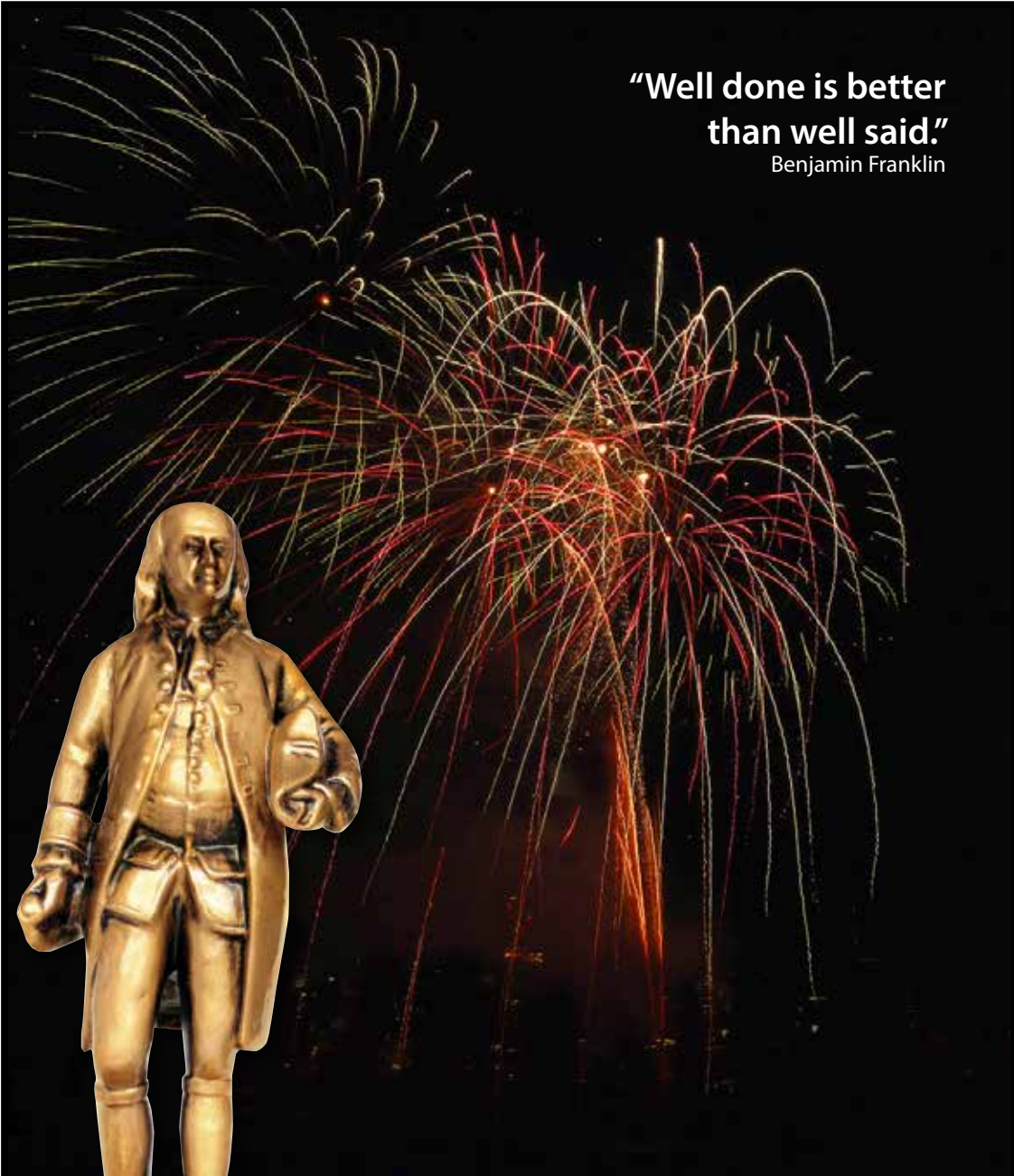
417 Main Street • Niantic, CT 06357 • 860-739-9479

www.benchmarkseniorliving.com



ASSISTED LIVING • MEMORY CARE

**"Well done is better
than well said."**
Benjamin Franklin



Best of the Best

Essex Printing
proud to be awarded the
2014 Print Industries of America
International "Benny" Award

And Print Industries of New England's

- Two 2014 Pinnacle Awards
- 2013 Award of Excellence

18 Industrial Park Road • Centerbrook CT 06409 • 860-767-9087 • essexprinting.com

High Hopes Fall Events

Lyme Hunter Pace Event to Benefit High Hopes, Connecticut Valley Pony Club, and Lyme Trails Association. This cross-country ride will be held Sunday, September 21th rain or shine at Lord Creek Farm in Lyme. For an application or more information please visit www.highhopestr.org or contact Sarah Carlson at scarlson@highhopestr.org.



Lyme Hunter Pace Event.

Fall Fashion Show. On October 23rd High Hopes will host a fashion show at Lyme Art Association featuring the latest fall looks from Saybrook Country Barn and sponsored by Guilford Savings Bank. For more information and tickets visit www.highhopestr.org or contact Trudy Burgess at tburgess@highhopestr.org.

High Hopes Annual Meeting and Open House - Sunday, October 19. High Hopes will hold its 40th annual meeting at its facility on Town Woods Road from 1:00 pm to 3:00 pm, with a demonstration, awards ceremony and reception.

Preceding the meeting, from 11:00 am to 1:00 pm will be High Hopes Annual Open Barn Day and 40th Anniversary Reunion. Both events are free and the public is welcome.

High Hopes Holiday Market - Sunday, November 16. Held 12:00-4:00 pm at High Hopes Therapeutic Riding, Inc., in Old Lyme. There will be 60 booths with crafts, gift items and gourmet selections, a fleet of food trucks, live music, children's entertainment, a raffle with great prizes and door prizes. Admission is free with a non-perishable food item for the Shoreline Soup Kitchens. For more information call 860-434-1974 or visit www.highhopestr.org.



High Hopes Holiday Market.



William Pitt

Sotheby's
INTERNATIONAL REALTY



Old Lyme: Estate setting on 4 acres near the mouth of the Connecticut River with deep water dock. Exceptional structure with two story great room, cooks kitchen, water views, first floor master suite. Offered at \$2,875,000



Old Lyme: Wonderful Italianate Victorian in the heart of Old Lyme Village. Beautiful gardens & grounds. Library, formal living room & dining room, MBR suite with bath & dressing area. In-law apartment. Offered at \$1,189,000



Old Lyme: Location, location, location. Own your own beautiful sandy beach. Front and rear decks with wonderful views. Currently configured as a duplex but easy conversion to single family home. Offered at \$869,000



Old Lyme: Totally remodeled three bedroom cottage in White Sand Beach area. Across the road from the beach with great water views. Granite and stainless kitchen, large living room with fireplace. Offered at \$399,000

Joe Kelly
860.287.1222
jkelly@wpsir.com



Selling The Shoreline

williampitt.com
ESSEX BROKERAGE | 13 MAIN STREET | 860.767.7488
OLD LYME BROKERAGE | 103 HALLS ROAD | 860.434.2400
Each Office is Independently Owned and Operated

MORTGAGE FINANCING AVAILABLE 1.855.298.5650
citi
© 2013 Citibank, N.A. equal housing lender, member FDIC. Citi, Citibank, Arc Design and Citi with Arc Design are registered service marks of Citigroup Inc.



ESSEX WELLNESS CENTER

SPECIALISTS IN HOLISTIC SERVICES



PRIVATE SPECIALIZED SERVICES PROVIDED BY HIGHLY EXPERIENCED PROFESSIONALS

- ▣ Naturopathic and Chinese Medicine
- ▣ Acupuncture, Anti-Aging Techniques
- ▣ Nutrition, Weight Loss/Management
- ▣ Hypnosis for Health, Spiritual Growth
- ▣ Mindfulness Meditation
- ▣ Life Coaching, Executive Coaching
- ▣ Leadership Coaching
- ▣ Art Therapy
- ▣ Eating Disorder | Body Image Therapy
- ▣ Massage
- ▣ Reiki | Healing Touch
- ▣ Substance Abuse & Addictions Counseling
- ▣ Art Classes and Creativity Workshops
- ▣ Personal Training & Health Coaching at our Private Picturesque Dockside Studio, ***Fitness on the Water***
- ▣ Yoga and Tai Chi Groups on the Water and Studio

Complete Customized Wellness Programs

Join Us Waterside at the Connecticut River Museum

AND IN OUR GROUP WELLNESS STUDIO, 8 NOVELTY LANE, ESSEX CT

TAI CHI

with Master Teacher David Chandler • All Levels
On-Going Series Offered Mornings and Evenings
Call Now to Sign Up – Space is Limited!

YOGA

Mondays and Fridays: 9:00 -10:00 AM
\$17 Drop In • \$150 for 10 Classes

28 MAIN STREET | ESSEX VILLAGE CONNECTICUT

For a private consultation call 860.767.7770 | info@essexwellnessctr.com



OLD LYME EVENTS
Old Lyme Town Hall
Lyme Street
Old Lyme, CT 06371

PRSR STD
U.S. Postage
PAID
Permit No. 155
Deep River, CT

POSTAL PATRON LOCAL

Awesome Loan Rates @ essexsavings.com



Essex, 35 Plains Road, 860-767-2573 • Essex, 9 Main Street, 860-767-8238
Chester, 203 Middlesex Avenue, 860-526-0000 • Madison, 99 Durham Road, 203-318-8611
Old Lyme, 101 Halls Road, 860-434-1646 • Old Saybrook, 155 Main Street, 860-388-3543
Call Toll-Free: 877-377-3922
www.essexsavings.com

Member FDIC

Equal Housing Lender

